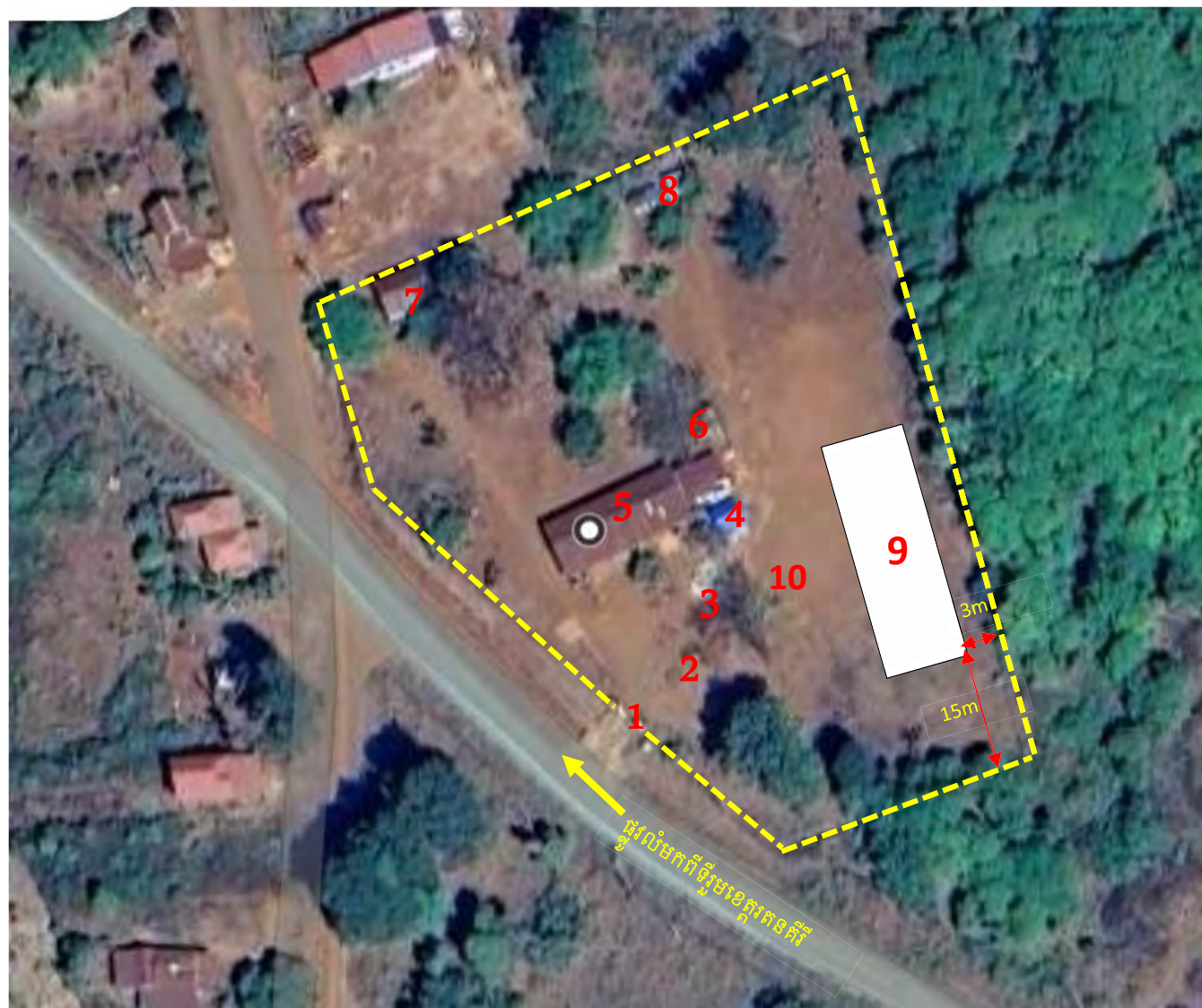
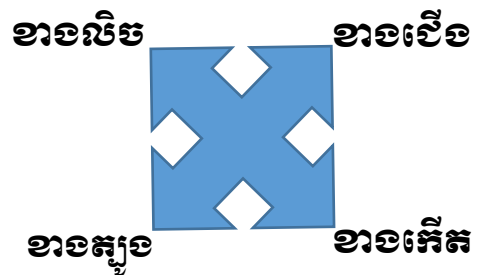


ផ្នែក
ស្វាគមន៍

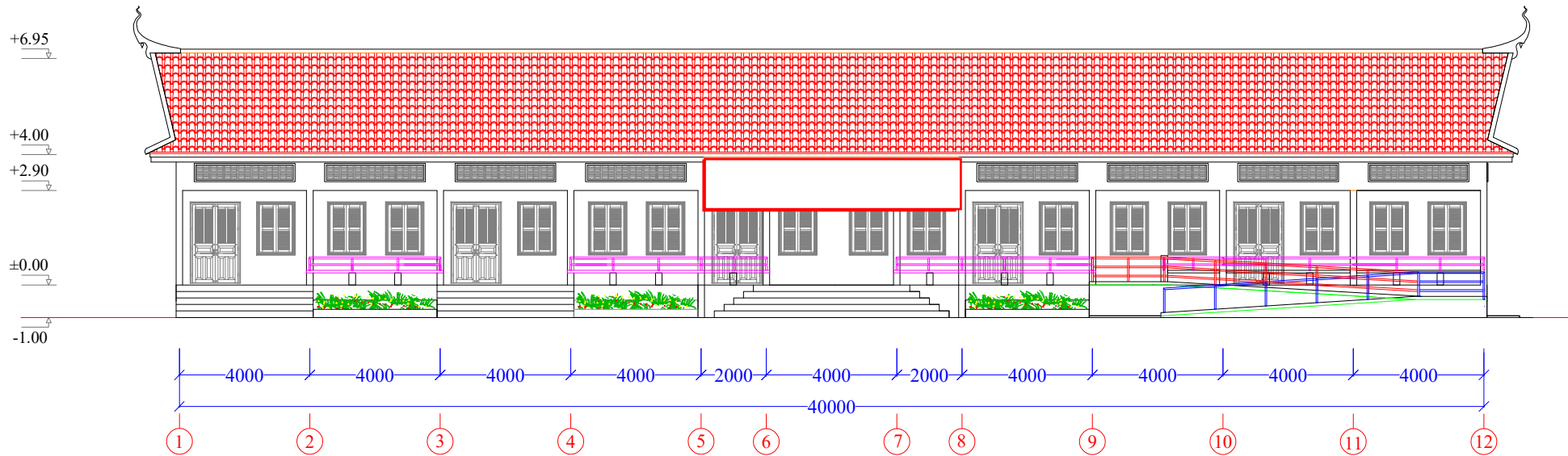
ARCHITECTURAL DRAWING

ចំណាំ៖

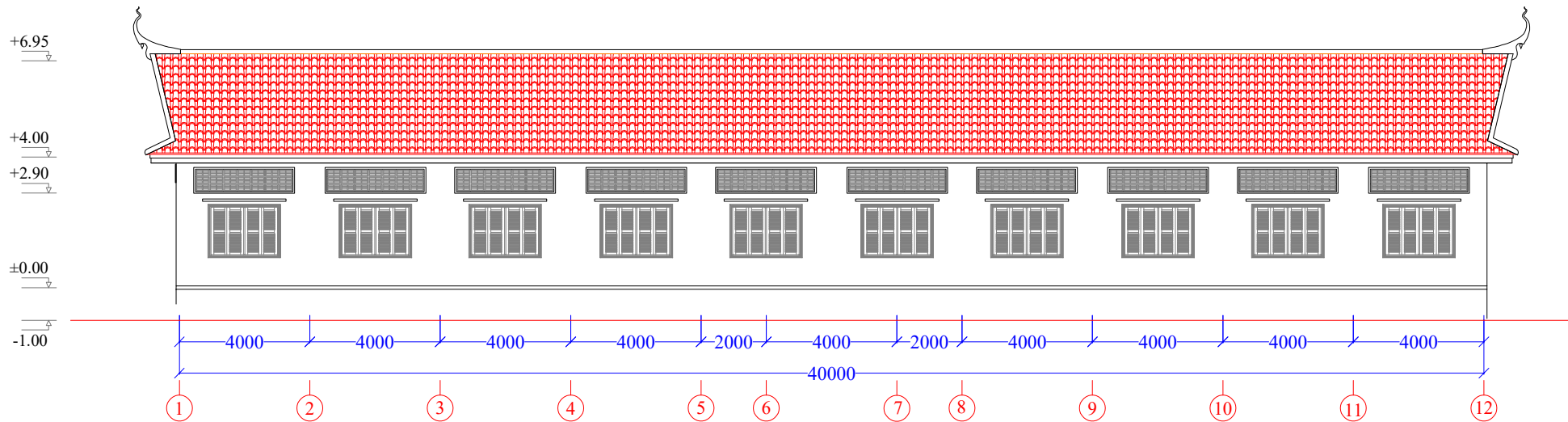
- - - - - : ព្រំដី
- (1): ច្រកចូល
- (2): ដងទងជាតិចាស់
- (3): រូបសំណាកសម្តេចព្រះសង្ឃរាជ ជួន ណាត
- (4): បណ្ណាល័យ
- (5): អគារចាស់ធ្វើពីឈើ មានពាបន្ទប់ និងមានសភាពចាស់ទ្រុឌទ្រោម និងមានសំយ៉ាបចំហៀងដាក់តុសម្រាប់សិស្សរៀន
- (6): ទីតាំង ស៊ីទែនទឹក និងមានអណ្តូងខូចៗ
- (7): សាលាមតេយ្យសហគមន៍
- (8): បន្ទប់ទឹក (ជួសជុលប្រើបាន)
- (9): អគារសិក្សាថ្មី ធ្វើពីបេតុង ប្រក់ក្បឿង ទំហំ (40*9)ម
- (10): ដងទងជាតិថ្មី សាងសង់ខាងមុខអគារថ្មីប្រវែង 15ម



ទីតាំងសាលាបឋមសិក្សា ឆ្មុយអំពិល (ខេត្តរតនគិរី)

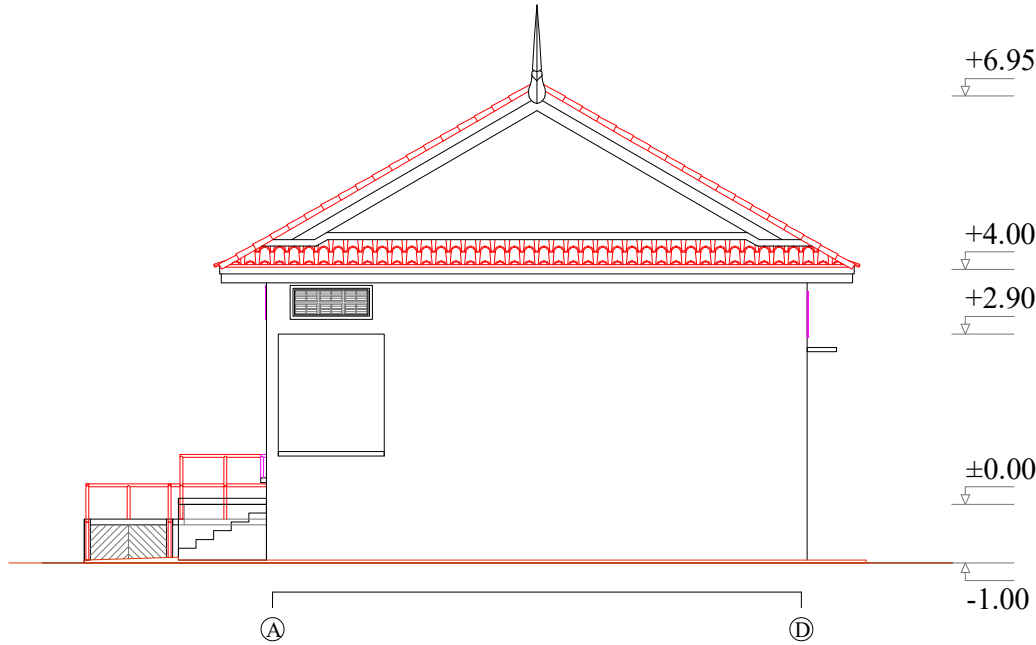


(Front Elevation)

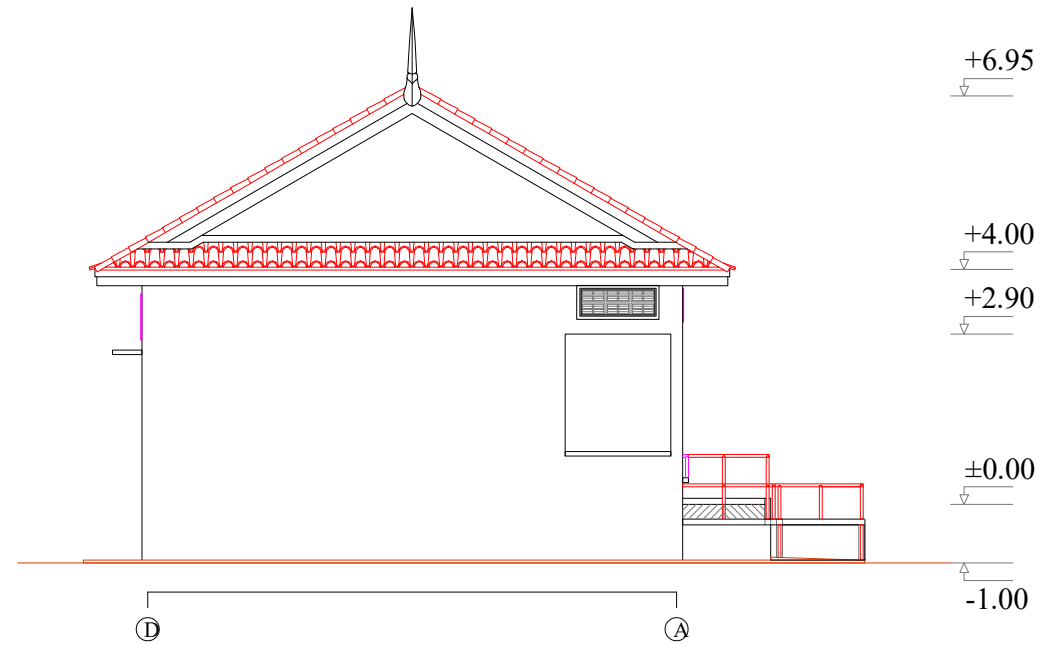


(Rear Elevation)

MINISTRY OF EDUCATION,YOUTH AND SPORT	EDUCATION SECTOR SUPPORT PROJECT SPONSORED BY ACLEDA-JARDINES EDUCATION FOUNDATION (AJF)	DATE...../...../.....		PROJECT : SCHOOL BUILDING 1 STORY 5 CLASSROOMS PLINTH LEVEL +1.00M	SCALE:	NO
		CHECKED BY:	DRAWN BY:		SHEETS:	A-16
				DRAWING TITLE : FRONT AND REAR ELEVATION		SHEET N°:



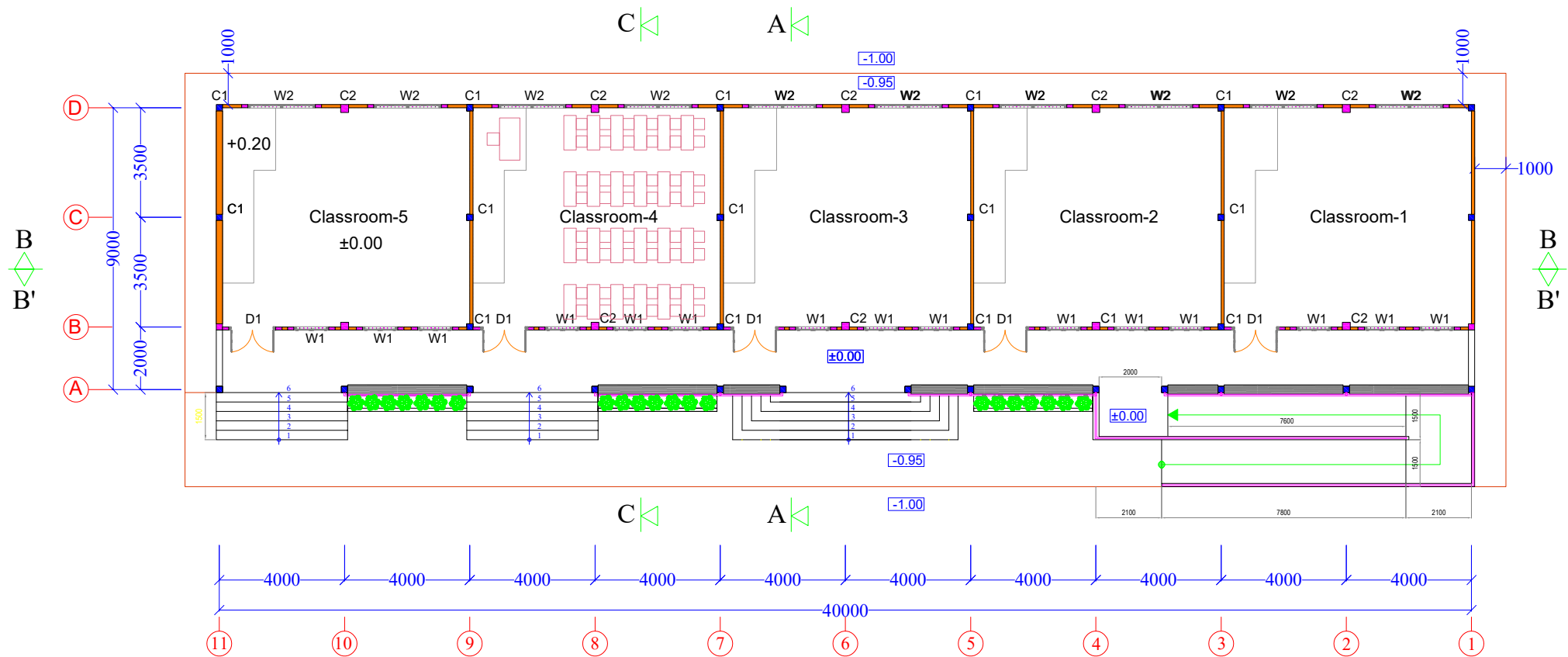
RIGHT ELEVATION



LEFT ELEVATION

APPROVED BY:
DIRECTOR OF DOC

MINISTRY OF EDUCATION, YOUTH AND SPORT	EDUCATION SECTOR SUPPORT PROJECT SPONSORED BY ACLEDA-JARDINES EDUCATION FOUNDATION (AJF)	DATE...../...../.....		PROJECT : SCHOOL BUILDING 1 STORY 5 CLASSROOMS PLINTH LEVEL +1.00M	SCALE:	NO
		CHECKED BY:	DRAWN BY:		SHEETS:	A-16
				DRAWING TITLE : RIGHT AND LEFT ELEVATION	SHEET Nº:	A-03



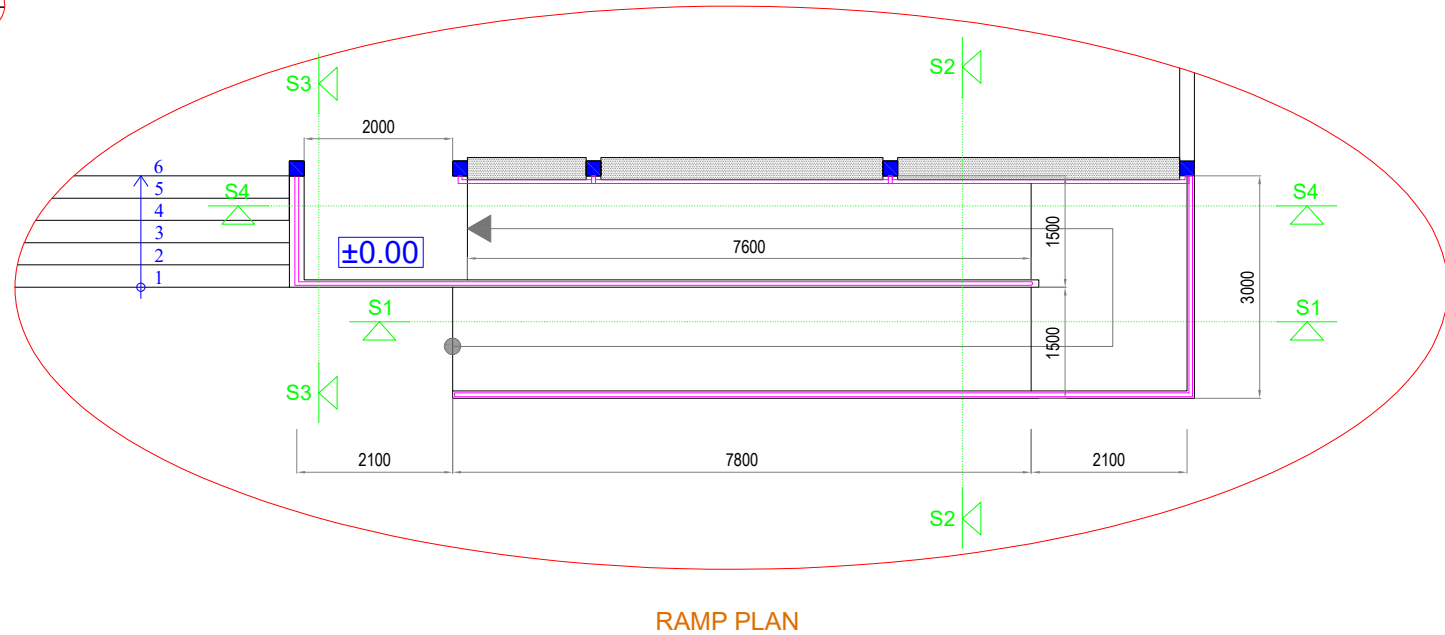
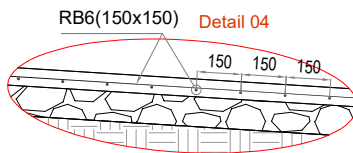
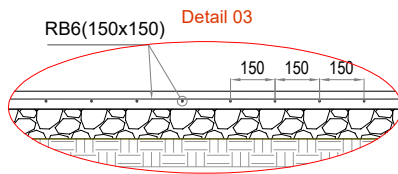
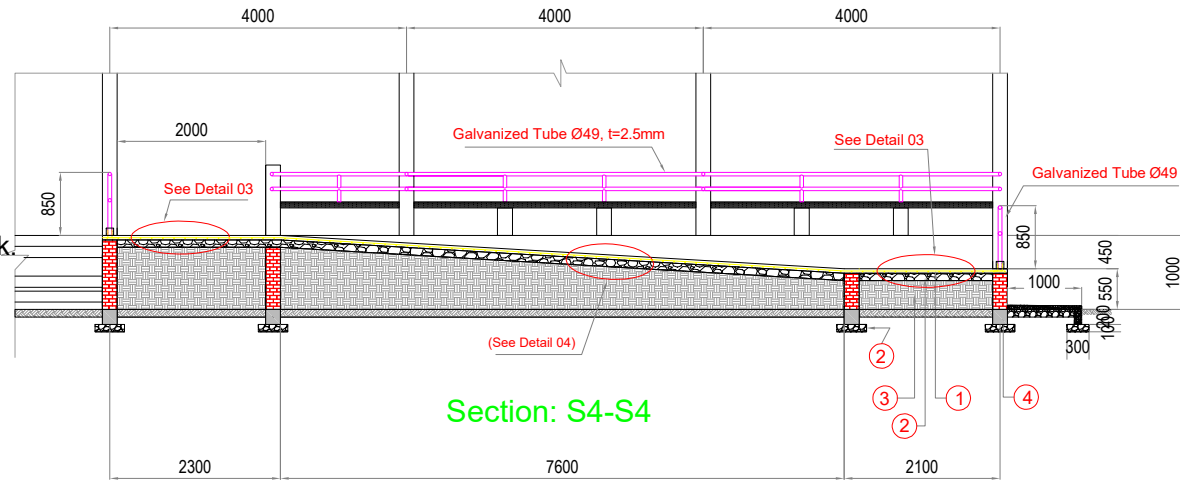
APPROVED BY:
DIRECTOR OF DOC

Floor Plan

MINISTRY OF EDUCATION,YOUTH AND SPORT	EDUCATION SECTOR SUPPORT PROJECT SPONSORED BY ACLEDA-JARDINES EDUCATION FOUNDATION (AJF)	DATE...../...../.....		PROJECT : SCHOOL BUILDING 1 STORY 5 CLASSROOMS PLINTH LEVEL +1.00M	SCALE:	NO
		CHECKED BY:	DRAWN BY:		SHEETS:	A-16
				DRAWING TITLE : FLOOR PLAN		SHEET Nº:

Note:

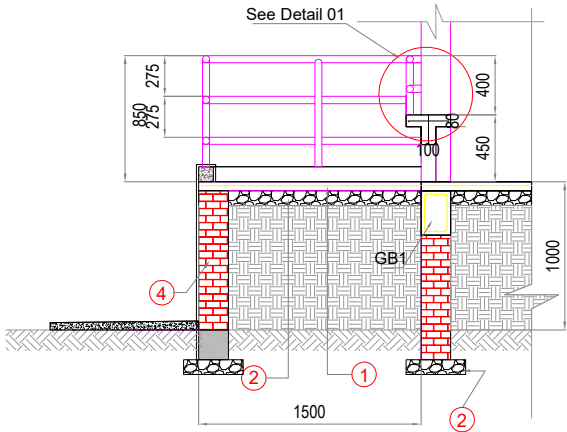
- ① -RC. Ramp Slab, 60mm thk.
- ② -Crushed Stone 4x6 Compacted, 100mm thk.
- ③ -Soil back fill and Compacted
- ④ -Solid brick Retaining wall for Ramp, 200mm thk.



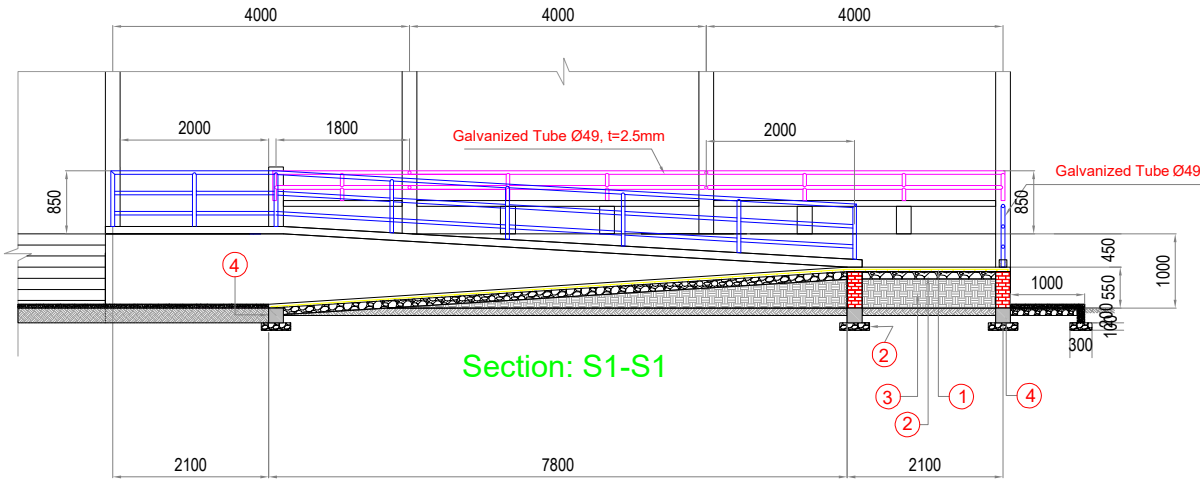
MINISTRY OF EDUCATION,YOUTH AND SPORT	EDUCATION SECTOR SUPPORT PROJECT SPONSORED BY ACLEDA-JARDINES EDUCATION FOUNDATION (AJF)	DATE...../...../.....		PROJECT : SCHOOL BUILDING 1 STORY 5 CLASSROOMS PLINTH LEVEL +1.00M	SCALE:	NO
		CHECKED BY:	DRAWN BY:		SHEETS:	A-17
		DRAWING TITLE : DETAIL RAMP		SHEET Nº:	A-05	

Note:

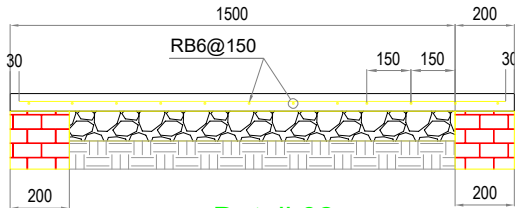
- ① -RC. Ramp Slab, 60mm thk.
- ② -Crushed Stone 4x6 Compacted, 100mm thk.
- ③ -Soil back fill and Compacted
- ④ -Solid brick Retaining wall for Ramp, 200mm thk.



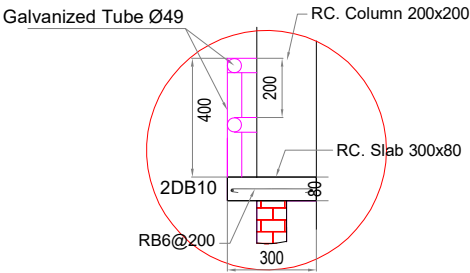
Section: S3-S3



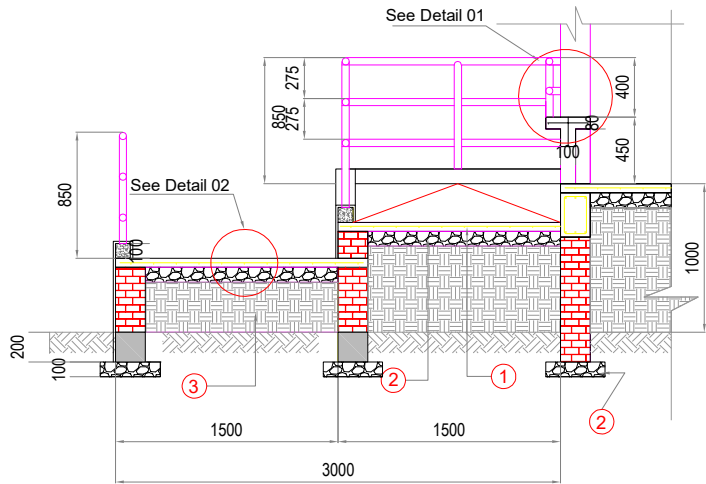
Section: S1-S1



Detail 02

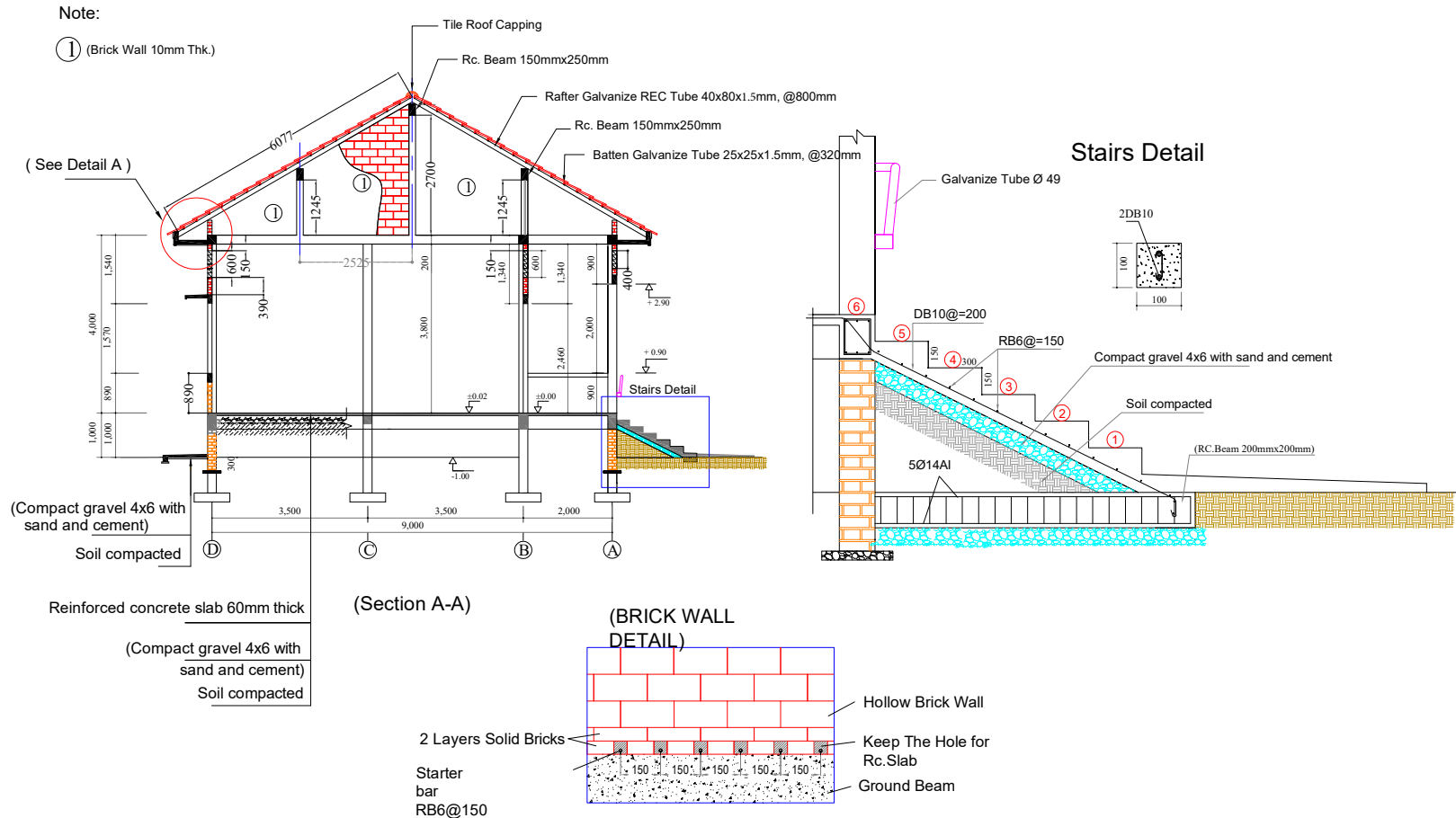


Detail 01

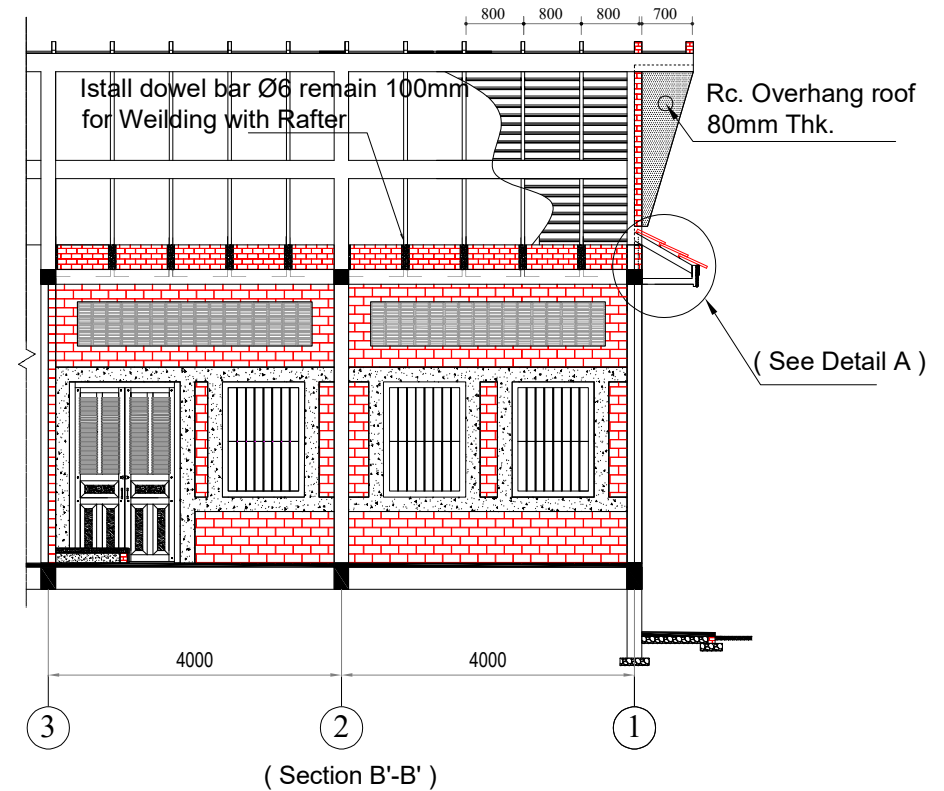
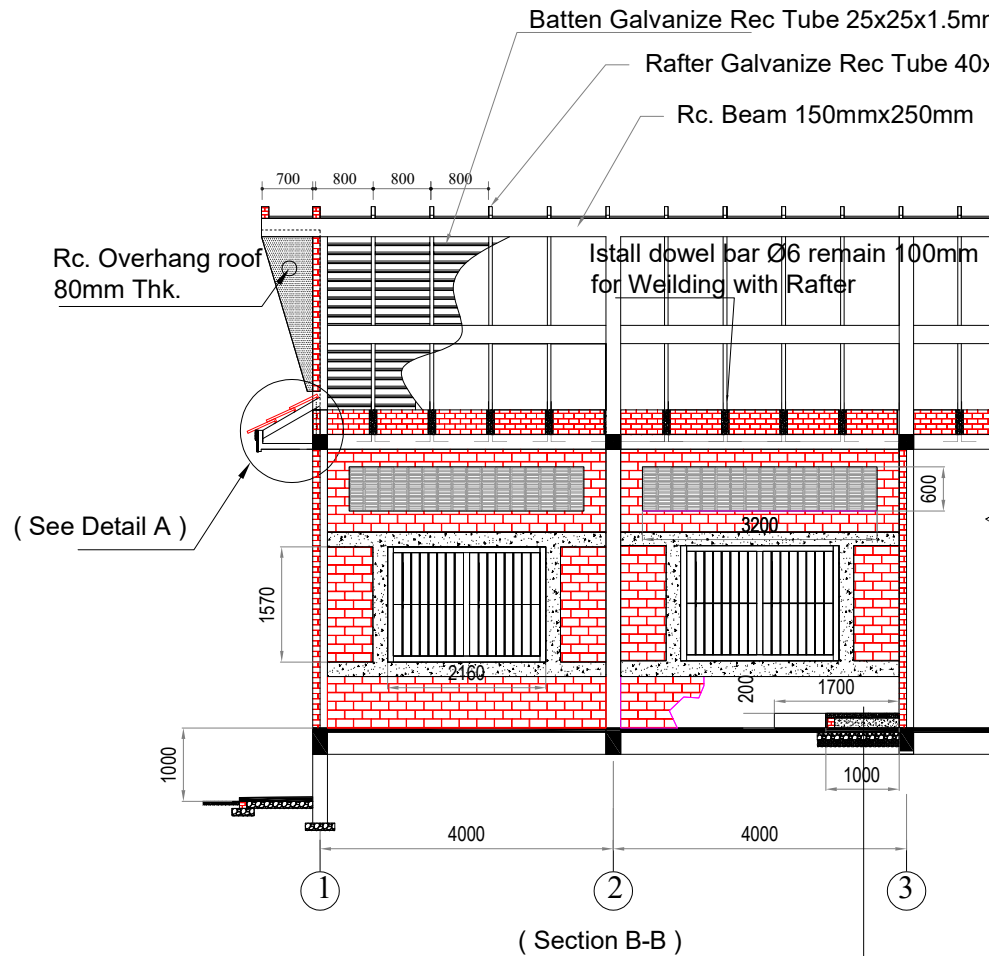


Section: S2-S2

MINISTRY OF EDUCATION,YOUTH AND SPORT	EDUCATION SECTOR SUPPORT PROJECT SPONSORED BY ACLEDA-JARDINES EDUCATION FOUNDATION (AJF)	DATE...../...../.....		PROJECT : SCHOOL BUILDING 1 STORY 5 CLASSROOMS PLINTH LEVEL +1.00M	SCALE:	NO
		CHECKED BY:	DRAWN BY:		SHEETS:	A-17
				DRAWING TITLE : DETAIL RAMP		SHEET N°:



MINISTRY OF EDUCATION,YOUTH AND SPORT	EDUCATION SECTOR SUPPORT PROJECT SPONSORED BY ACLEDA-JARDINES EDUCATION FOUNDATION (AJF)	DATE...../...../.....		PROJECT :	SCHOOL BUILDING 1 STORY 5 CLASSROOMS PLINTH LEVEL +1.00M	SCALE:	NO
		CHECKED BY:	DRAWN BY:			SHEETS:	A-17
				DRAWING TITLE :	SECTION B-B	SHEET N°:	A-07



Note :

- All steel roof members must be cleaned and painted with two coats of rust proof paint.
- Rafter are welded to steel bar DB10 connected to the beam reinforcement.

Reinforced concrete slab 50mm thick

Compacted sand

Reinforced concrete slab 60mm thick

(Compact gravel 4x6 with sand and cement)

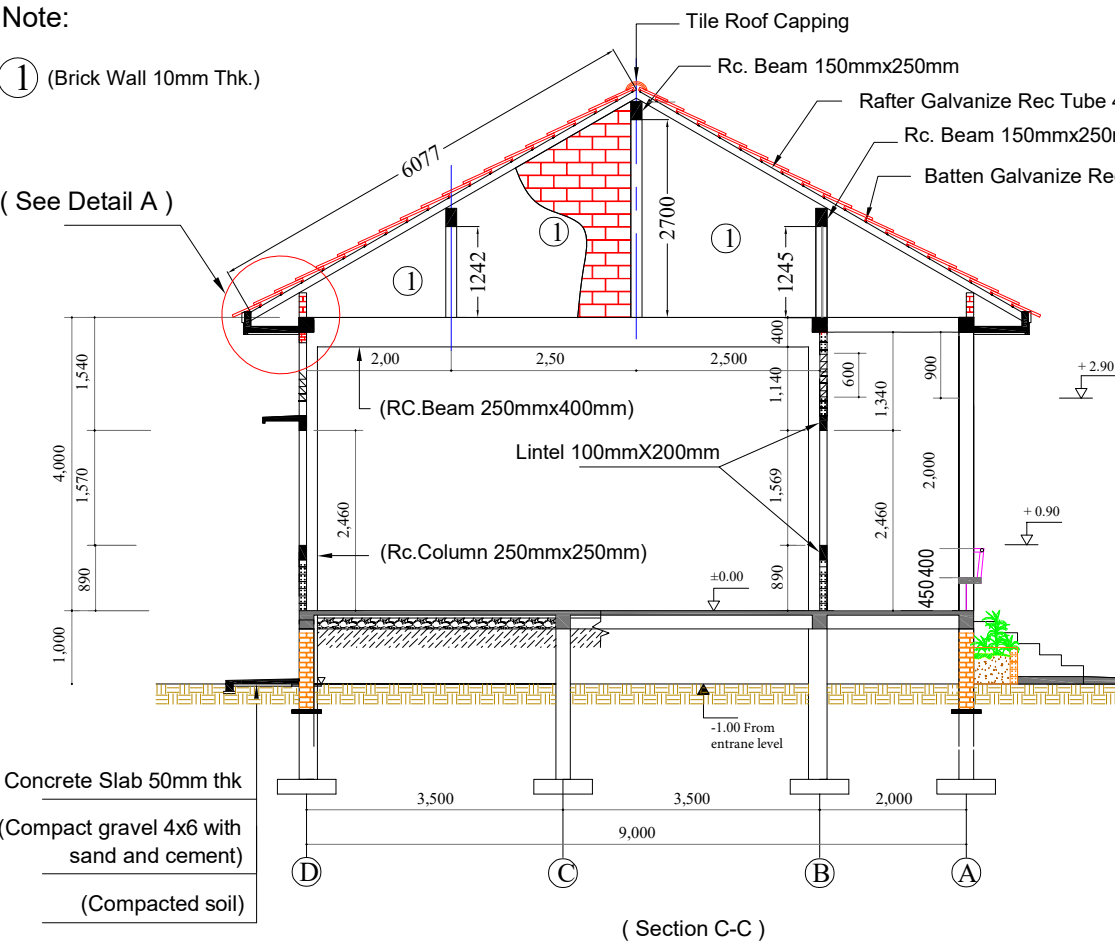
Soil compacted

MINISTRY OF EDUCATION,YOUTH AND SPORT	EDUCATION SECTOR SUPPORT PROJECT SPONSORED BY ACLEDA-JARDINES EDUCATION FOUNDATION (AJF)	DATE...../...../.....		PROJECT : SCHOOL BUILDING 1 STORY 5 CLASSROOMS PLINTH LEVEL +1.00M	SCALE:	NO
		CHECKED BY:	DRAWN BY:		SHEETS:	A-16
				DRAWING TITLE : SECTION B-B	SHEET N°:	A-08

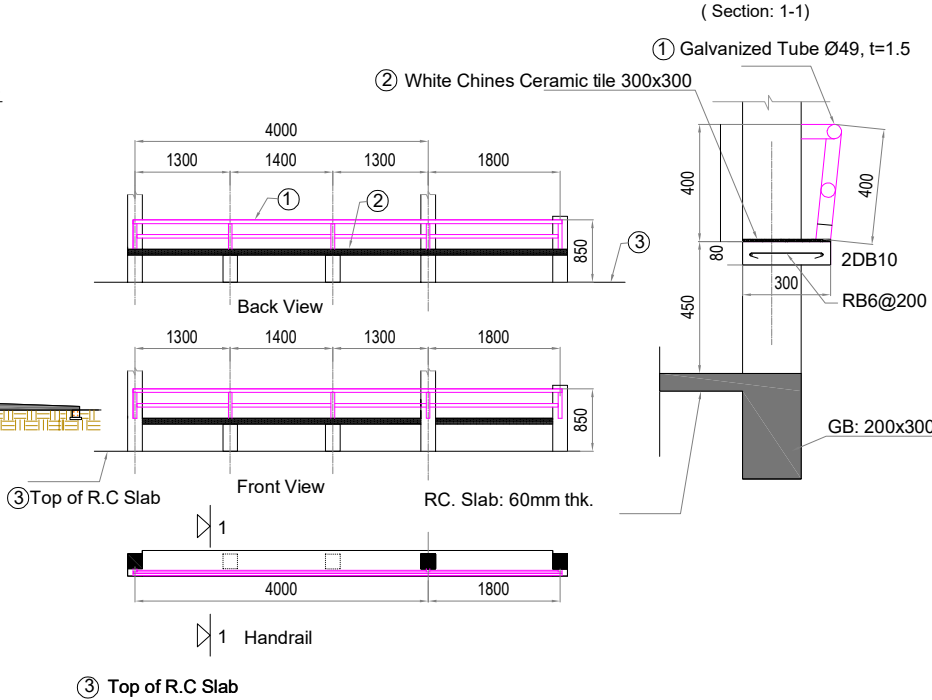
Note:

① (Brick Wall 10mm Thk.)

(See Detail A)



Handrail Detail

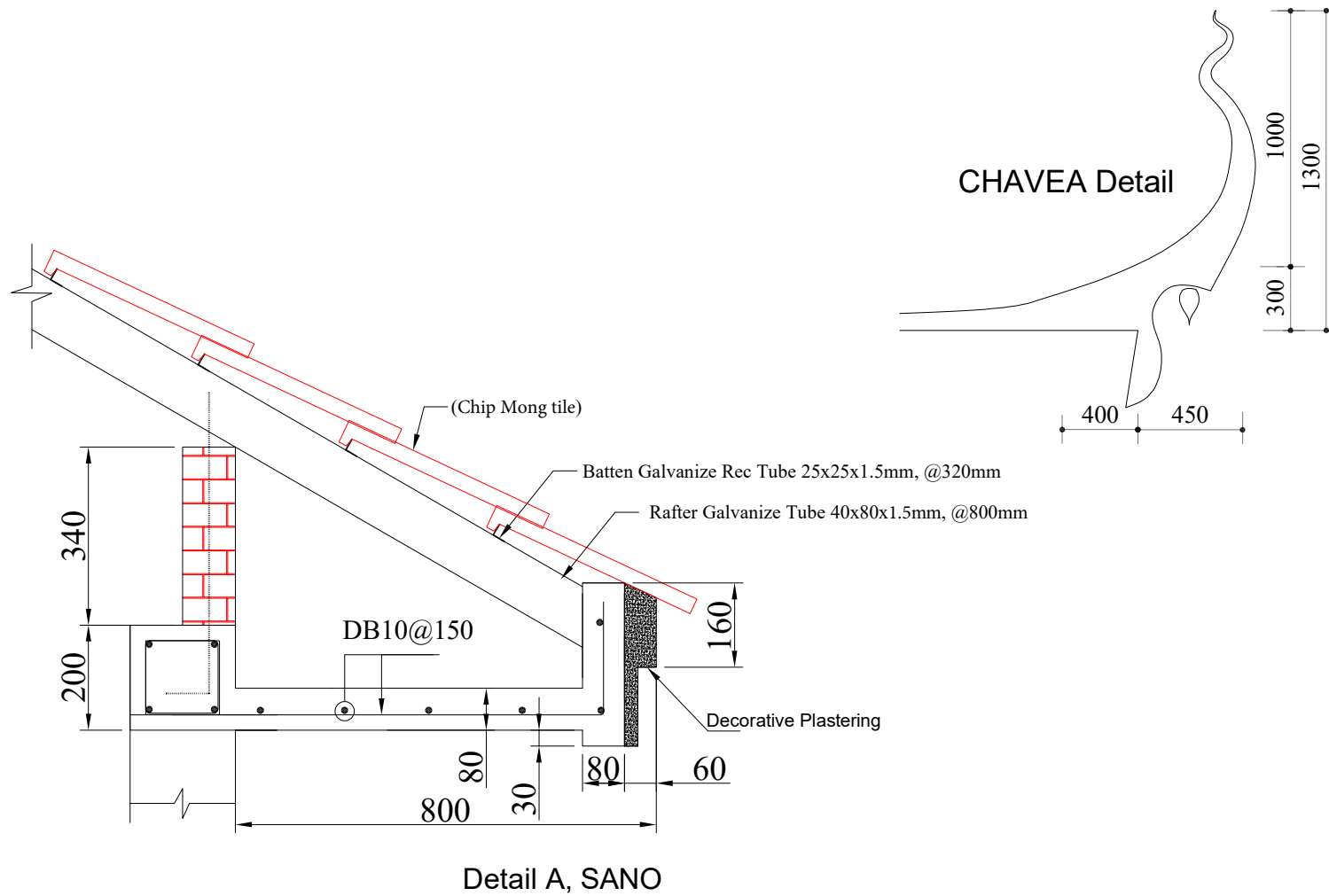


Note :

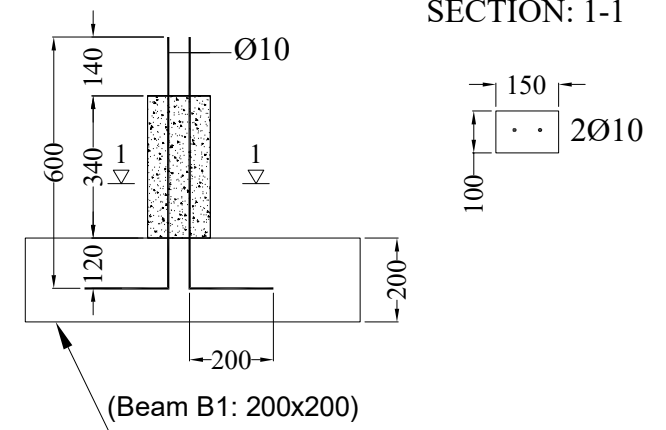
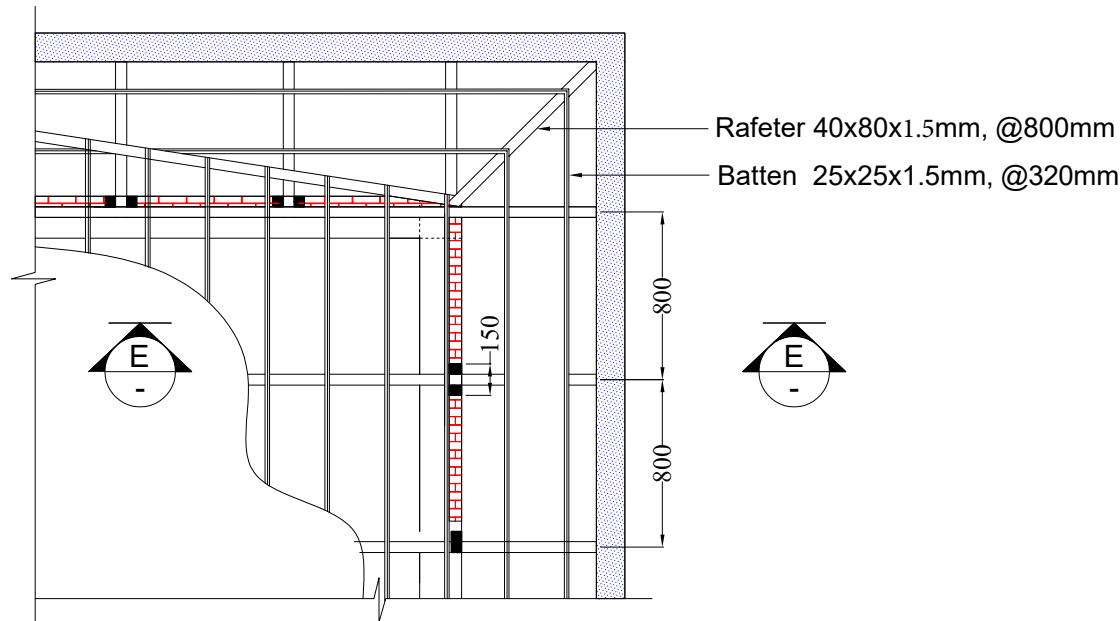
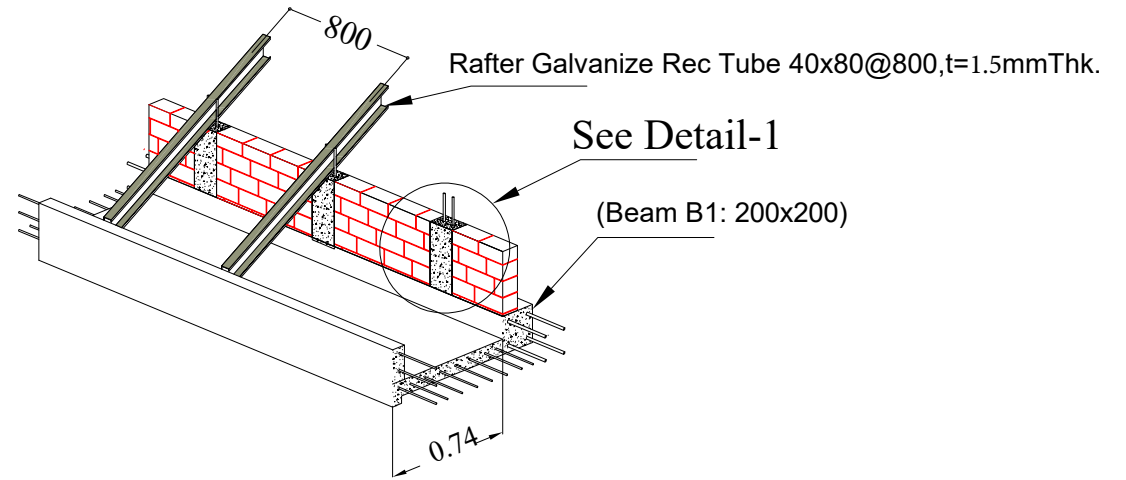
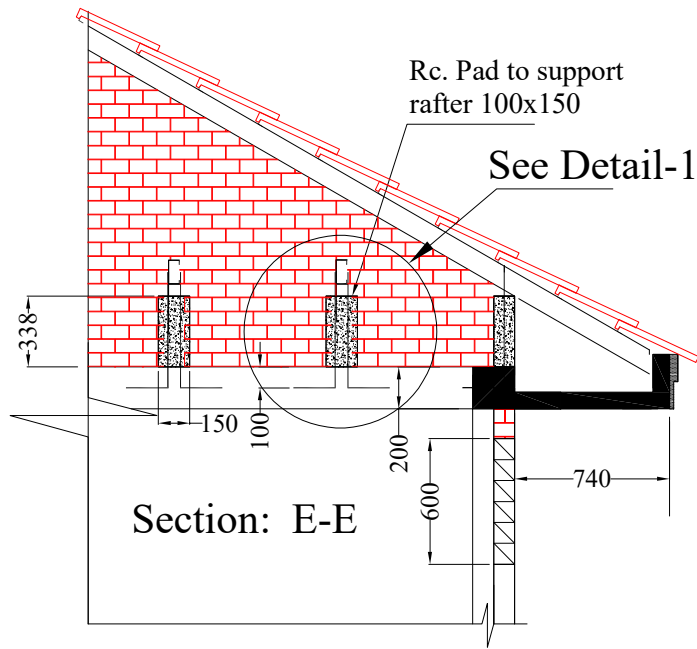
- All steel roof members must be cleaned and painted with two coats of rust proof paint.
- Rafter are welded to steel bar DB10 connected to the beam reinforcement.
- Level -1.00m take from entrane level

APPROVED BY:
DIRECTOR OF DOC

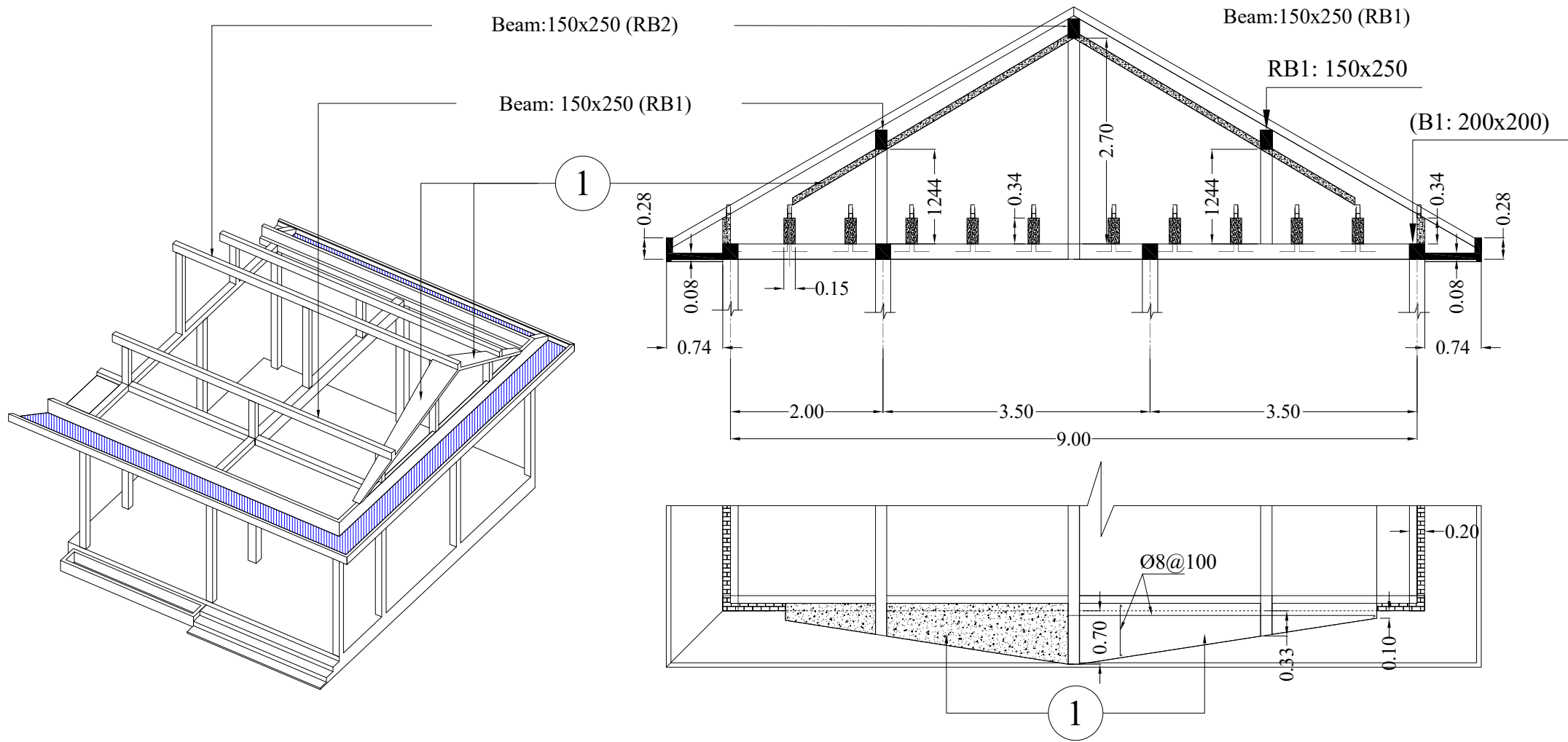
MINISTRY OF EDUCATION,YOUTH AND SPORT	EDUCATION SECTOR SUPPORT PROJECT SPONSORED BY ACLEDA-JARDINES EDUCATION FOUNDATION (AJF)	DATE...../...../.....		PROJECT : SCHOOL BUILDING 1 STORY 5 CLASSROOMS
--	--	-----------------------	--	--



MINISTRY OF EDUCATION,YOUTH AND SPORT	EDUCATION SECTOR SUPPORT PROJECT SPONSORED BY ACLEDA-JARDINES EDUCATION FOUNDATION (AJF)	DATE...../...../.....		PROJECT : SCHOOL BUILDING 1 STORY 5 CLASSROOMS PLINTH LEVEL +1.00M	SCALE:	NO
		CHECKED BY:	DRAWN BY:		SHEETS:	A-17
				DRAWING TITLE : SECTION B-B		SHEET Nº:



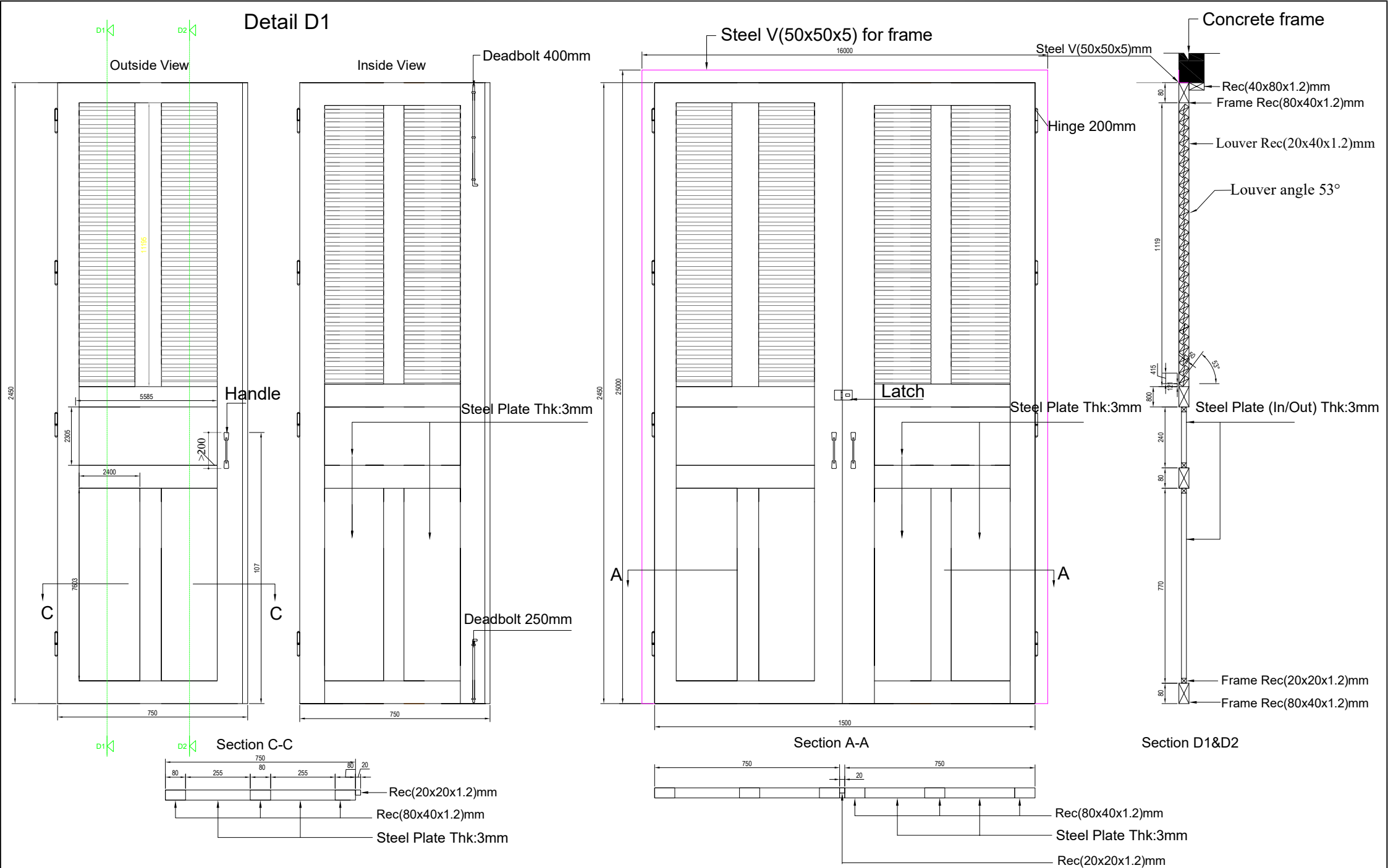
MINISTRY OF EDUCATION,YOUTH AND SPORT	EDUCATION SECTOR SUPPORT PROJECT SPONSORED BY ACLEDA-JARDINES EDUCATION FOUNDATION (AJF)	DATE...../...../.....		PROJECT : SCHOOL BUILDING 1 STORY 5 CLASSROOMS PLINTH LEVEL +1.00M	SCALE:	NO
		CHECKED BY:	DRAWN BY:	DRAWING TITLE : RC COLUMN FOR SUPPORT END OF RAFTER DETAIL	SHEETS:	A-17
					SHEET Nº:	A-11



1 Rc. Overhang roof 80mm Thk.

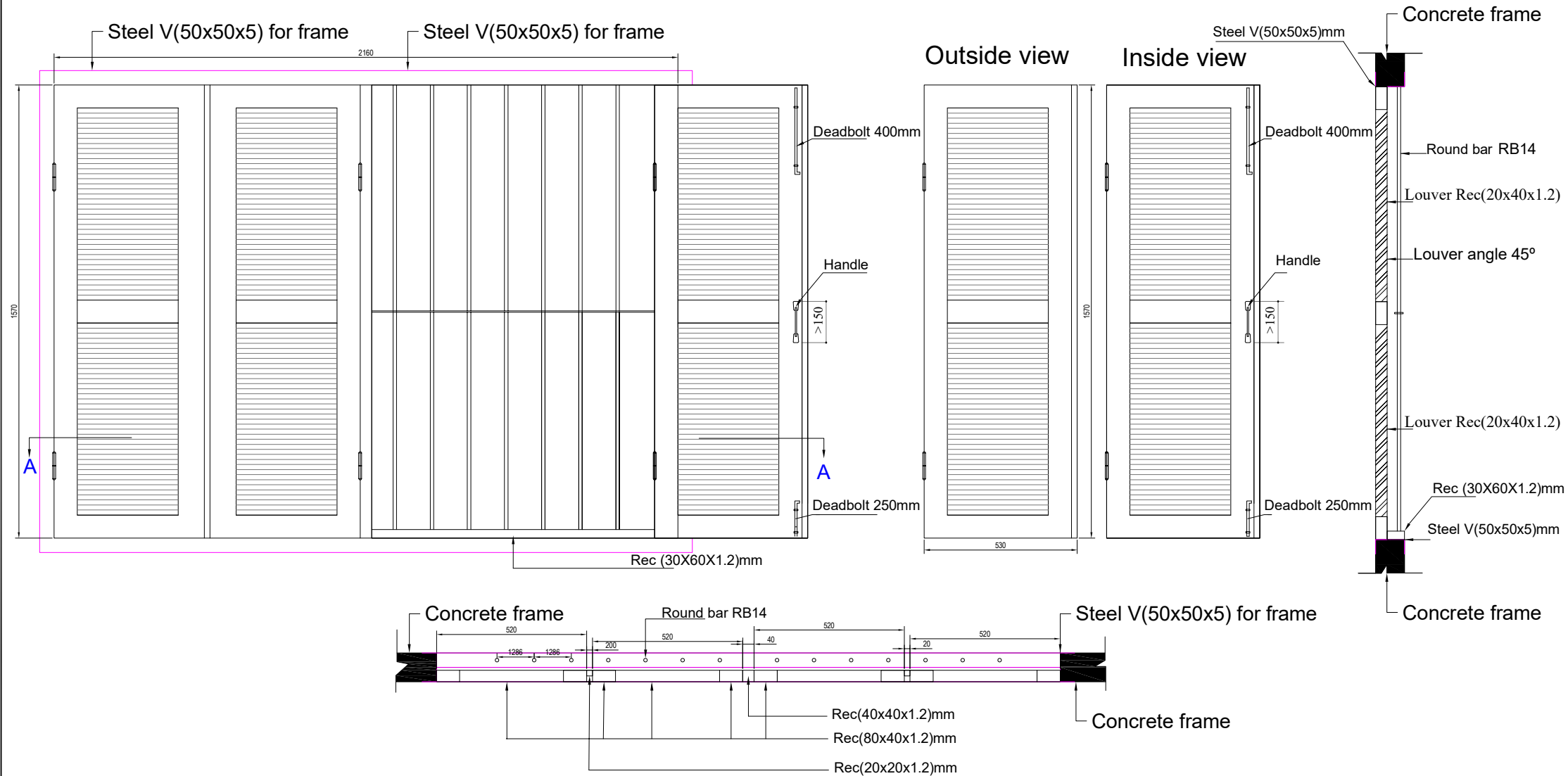
Note:
Rebar of overhang roof Ø8@100

Detail D1



MINISTRY OF EDUCATION,YOUTH AND SPORT	EDUCATION SECTOR SUPPORT PROJECT SPONSORED BY ACLEDA-JARDINES EDUCATION FOUNDATION (AJF)	DATE...../...../.....		PROJECT : SCHOOL BUILDING 1 STORY 5 CLASSROOMS PLINTH LEVEL +1.00M	SCALE:	NO
		CHECKED BY:	DRAWN BY:		SHEETS:	A-17
		DRAWING TITLE : DOOR D1 DETAIL			SHEET N°:	A-13

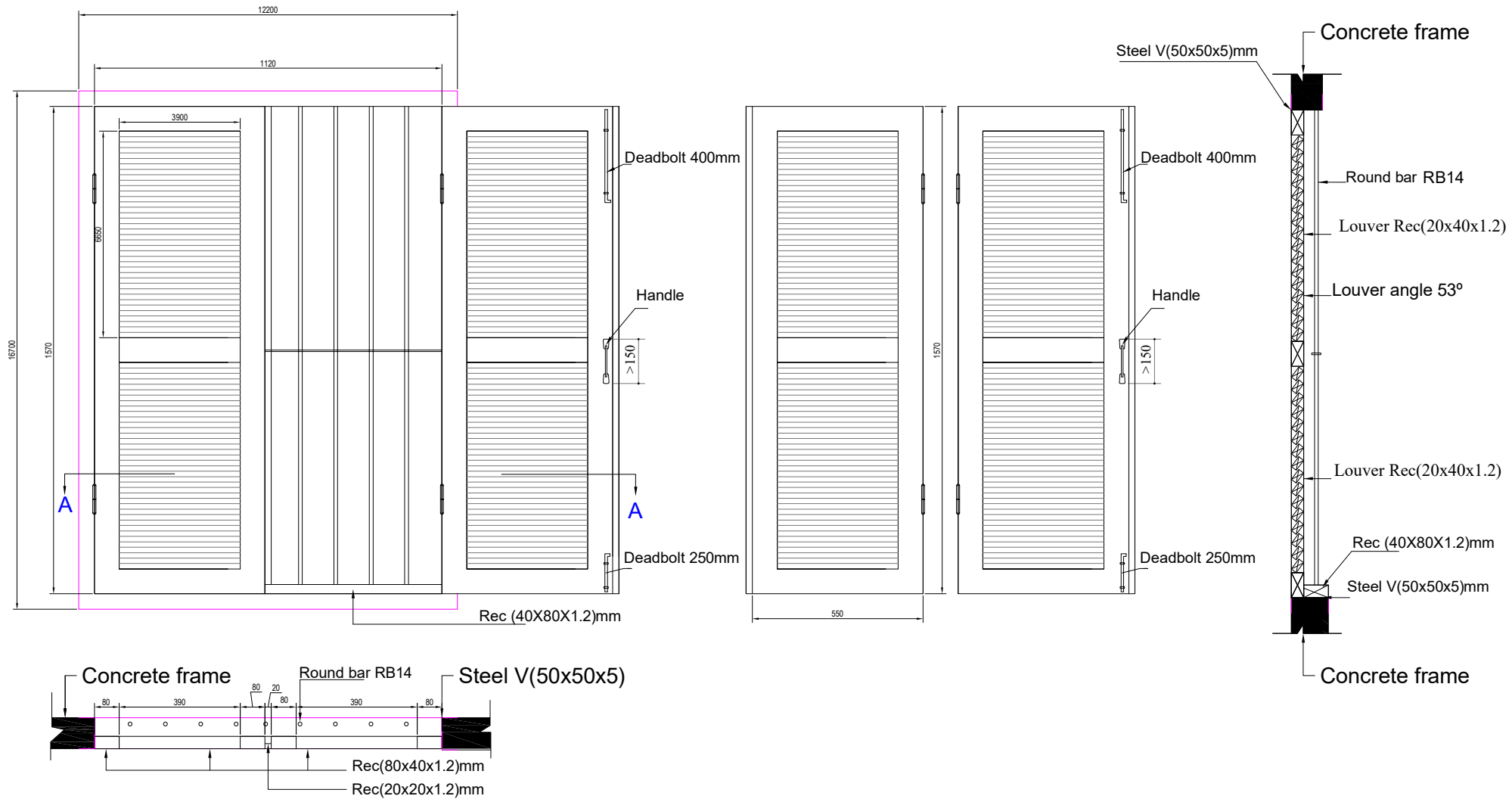
Window detail W2



Section A-A

MINISTRY OF EDUCATION,YOUTH AND SPORT	EDUCATION SECTOR SUPPORT PROJECT SPONSORED BY ACLEDA-JARDINES EDUCATION FOUNDATION (AJF)	DATE...../...../.....		PROJECT : SCHOOL BUILDING 1 STORY 5 CLASSROOMS PLINTH LEVEL +1.00M	SCALE:	NO
		CHECKED BY:	DRAWN BY:		SHEETS:	A-17
				DRAWING TITLE : WINDOW W1 DETAIL	SHEET N°:	A-14

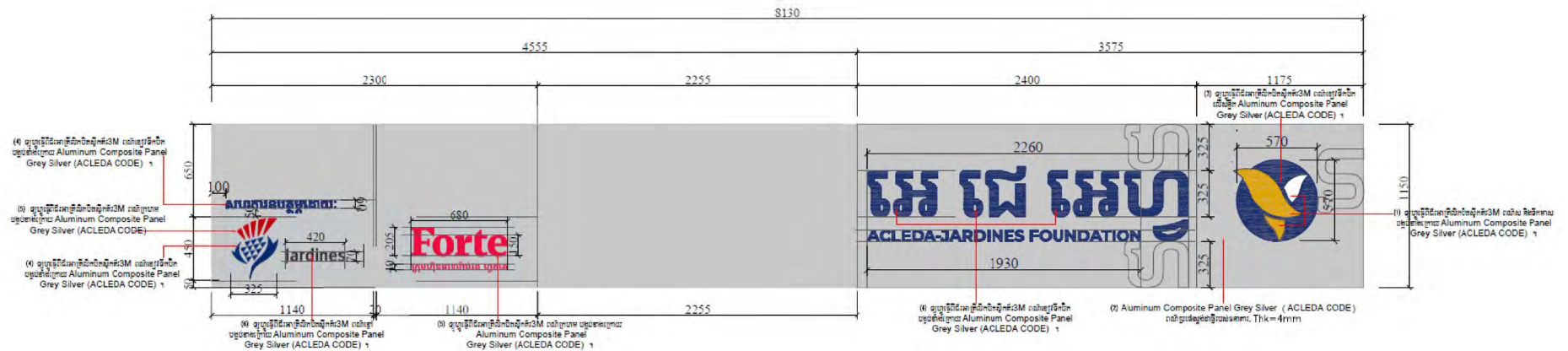
Window detail W1



Section A-A

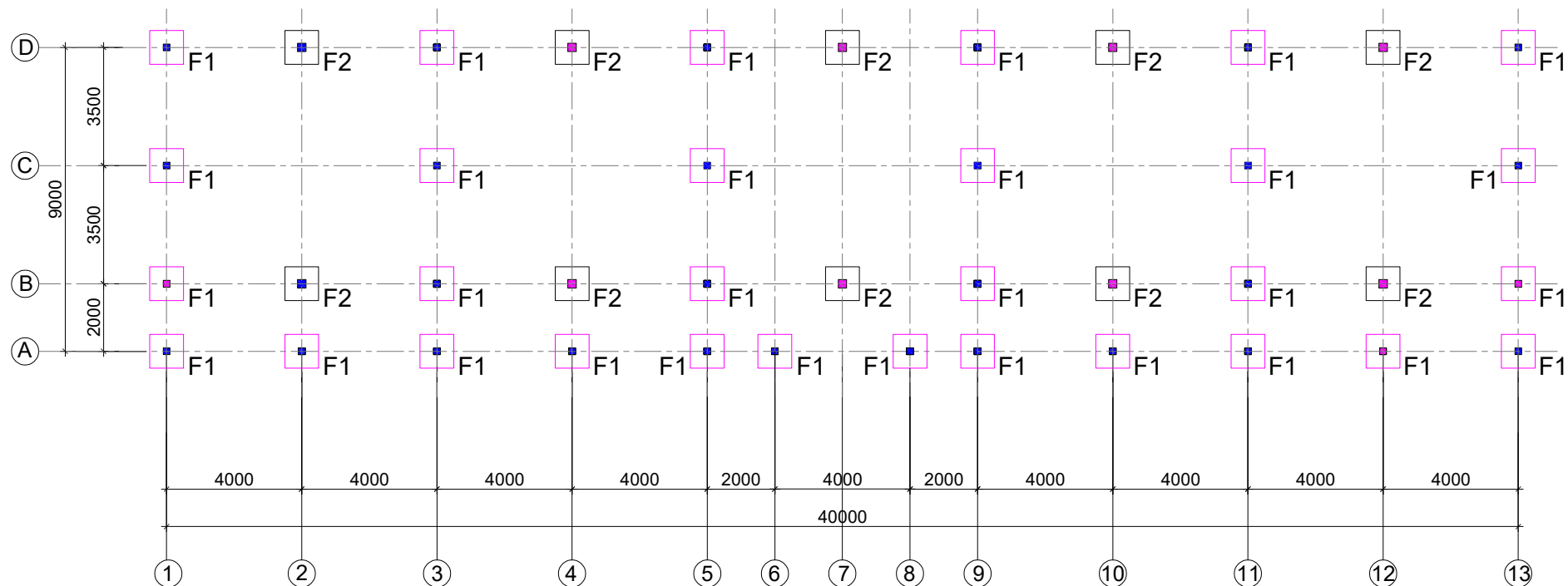
MINISTRY OF EDUCATION,YOUTH AND SPORT	EDUCATION SECTOR SUPPORT PROJECT SPONSORED BY ACLEDA-JARDINES EDUCATION FOUNDATION (AJF)	DATE...../...../.....		PROJECT : SCHOOL BUILDING 1 STORY 5 CLASSROOMS PLINTH LEVEL +1.00M	SCALE:	NO
		CHECKED BY:	DRAWN BY:		SHEETS:	A-17
		DRAWING TITLE : WINDOW W2 DETAIL			SHEET N°:	A-15

Signboard



MINISTRY OF EDUCATION,YOUTH AND SPORT	EDUCATION SECTOR SUPPORT PROJECT SPONSORED BY ACLEDA-JARDINES EDUCATION FOUNDATION (AJF)	DATE...../...../.....		PROJECT : SCHOOL BUILDING 1 STORY 5 CLASSROOMS PLINTH LEVEL +1.00M	SCALE:	NO
		CHECKED BY:	DRAWN BY:	DRAWING TITLE : Signboard	SHEETS:	A-17
					SHEET N°:	A-17

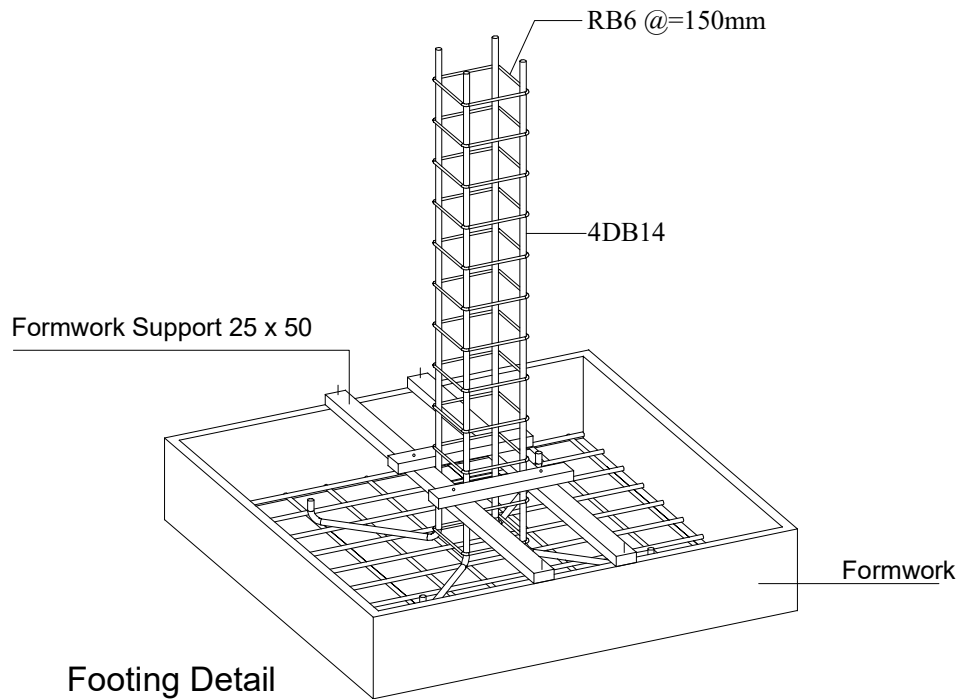
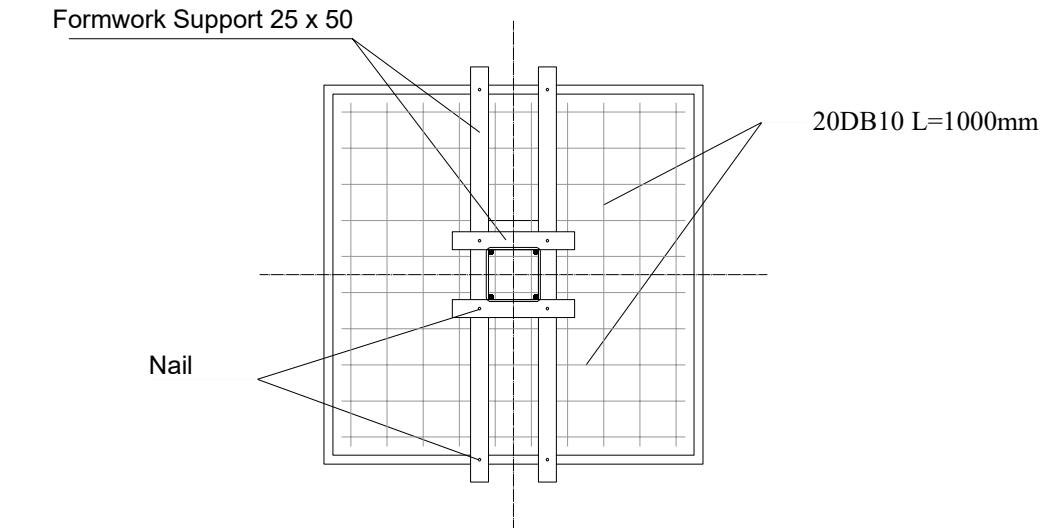
STRUCTURAL DRAWING



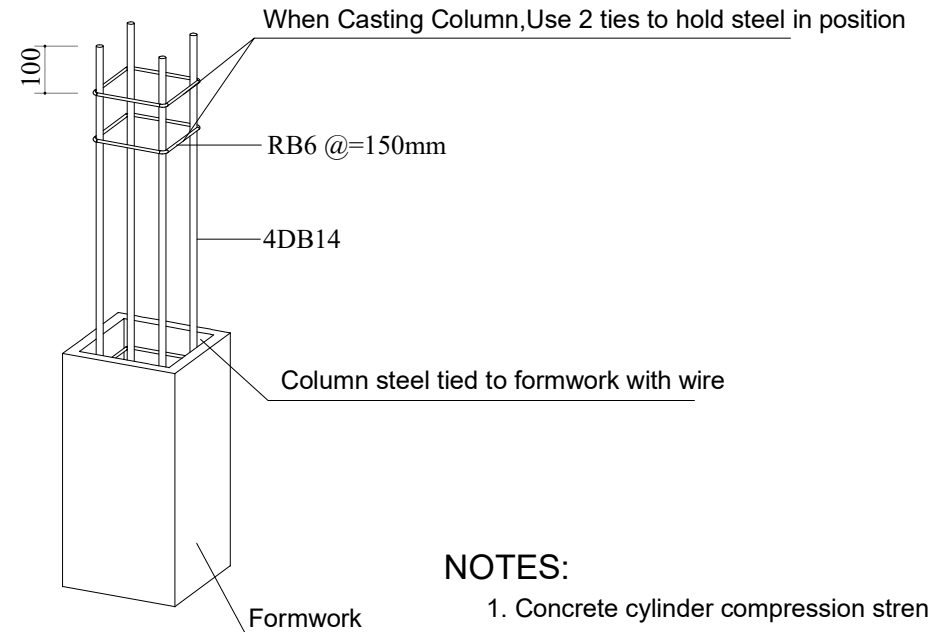
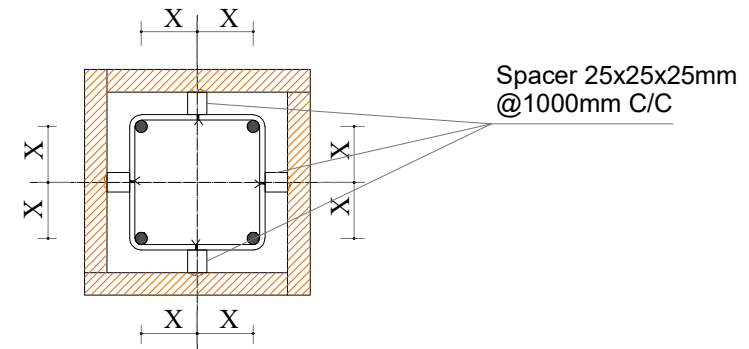
(Pile Group Plan)

MINISTRY OF EDUCATION,YOUTH AND SPORT	EDUCATION SECTOR SUPPORT PROJECT SPONSORED BY ACLEDA-JARDINES EDUCATION FOUNDATION (AJF)	DATE...../...../.....		PROJECT : SCHOOL BUILDING 1 STORY 5 CLASSROOMS PLINTH LEVEL +1.00M	SCALE:	NO
		CHECKED BY:	DRAWN BY:		SHEETS:	S16
		DRAWING TITLE : PILE GROUP PLAN			SHEET Nº:	S-01

Detail to check before casting footing and column



Footing Detail



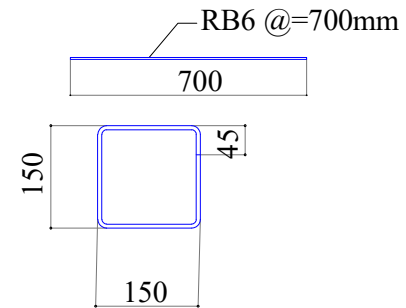
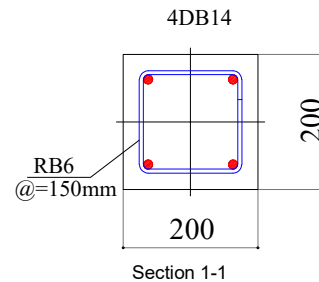
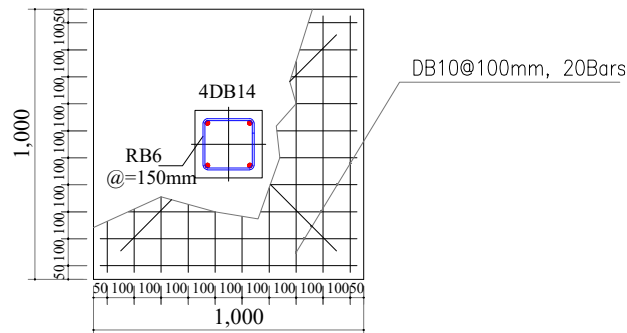
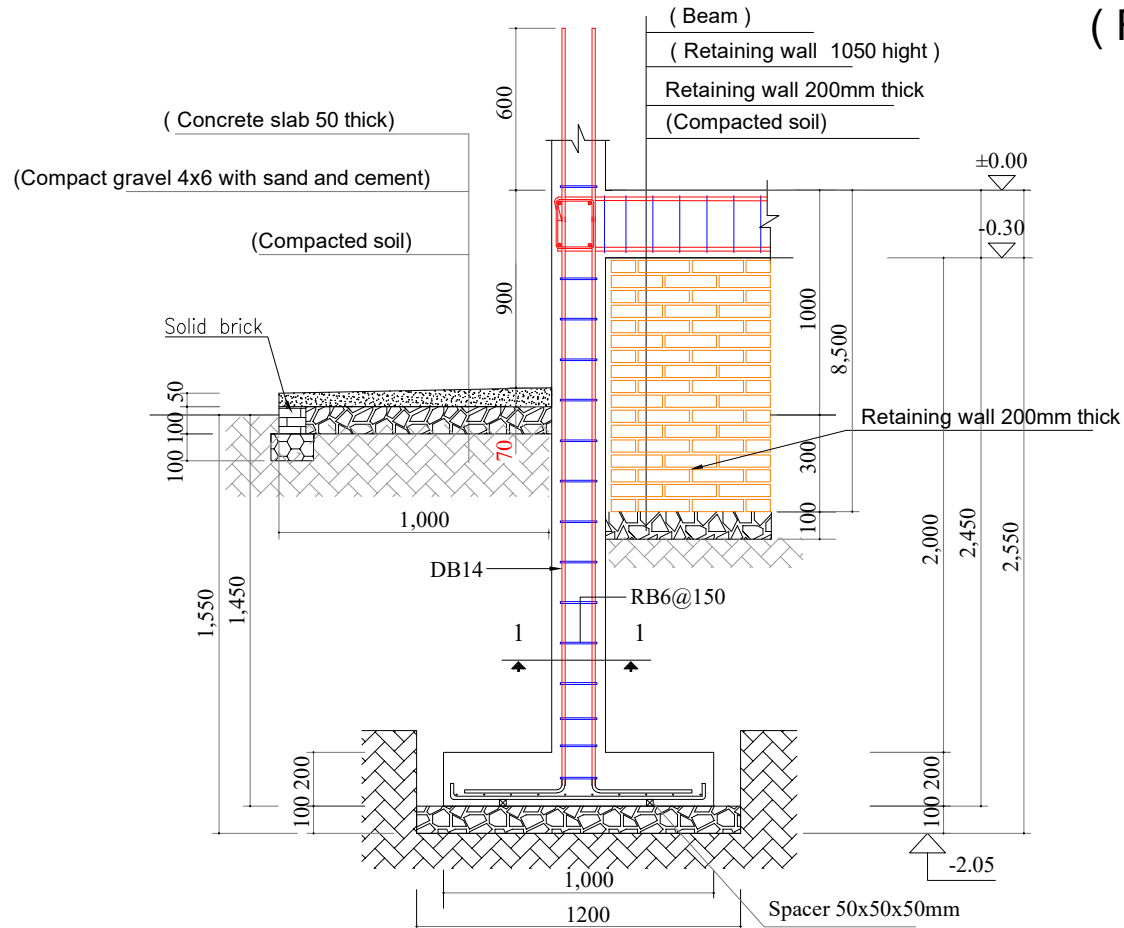
Column Detail

NOTES:

1. Concrete cylinder compression strength, 28days is $f'_c = 25\text{MPa}$
2. DB yield strength $f_y = 390\text{MPa}$
3. RB yield strength $f_y = 235\text{MPa}$
4. Concrete cover rebar column = 25mm

MINISTRY OF EDUCATION, YOUTH AND SPORT	EDUCATION SECTOR SUPPORT PROJECT SPONSORED BY ACLEDA-JARDINES EDUCATION FOUNDATION (AJF)	DATE...../...../.....		PROJECT : SCHOOL BUILDING 1 STORY 5 CLASSROOMS PLINTH LEVEL +1.00M	SCALE: NO
		CHECKED BY:	DRAWN BY:	DRAWING TITLE : DETAIL TO CHECK BEFORE CASTING FOOTING AND COLUMN	SHEETS: S16
					SHEET Nº: S-02

(Footing and column detail F1)



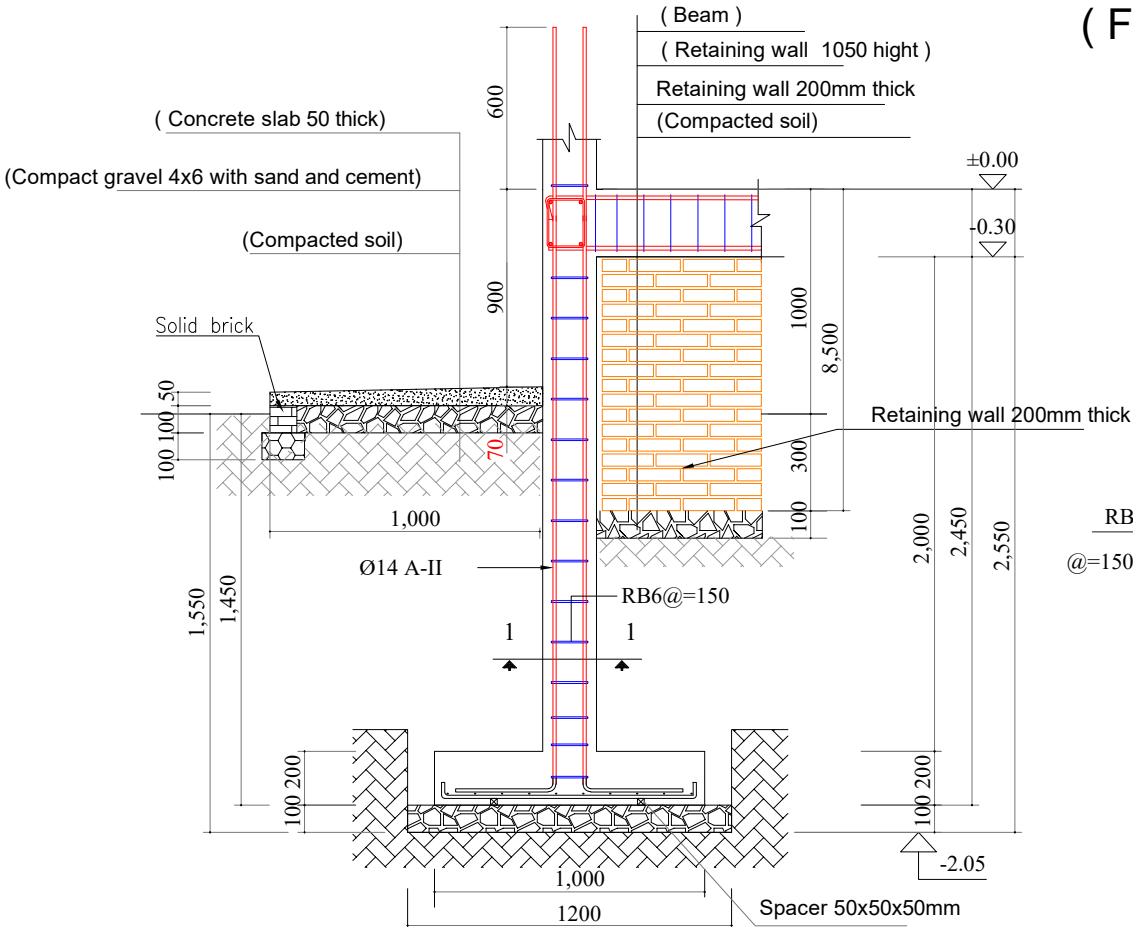
stirrup detail

NOTES:

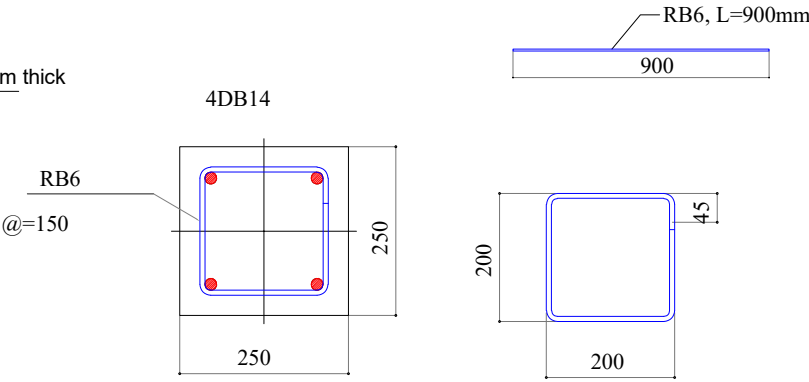
1. Concrete cylinder compression strength, 28days is $f'_c = 25\text{MPa}$
2. DB yield strength $f_y = 390\text{MPa}$
3. RB yield strength $f_y = 235\text{MPa}$
4. Concrete cover rebar column = 25mm

MINISTRY OF EDUCATION,YOUTH AND SPORT	EDUCATION SECTOR SUPPORT PROJECT SPONSORED BY ACLEDA-JARDINES EDUCATION FOUNDATION (AJF)	DATE...../...../.....		PROJECT : SCHOOL BUILDING 1 STORY 5 CLASSROOMS PLINTH LEVEL +1.00M	SCALE:	NO
		CHECKED BY:	DRAWN BY:		SHEETS:	S16
				DRAWING TITLE : FOOTING AND COLUMN DETAIL F1	SHEET N°:	S-03

(Footing and column detail F2)

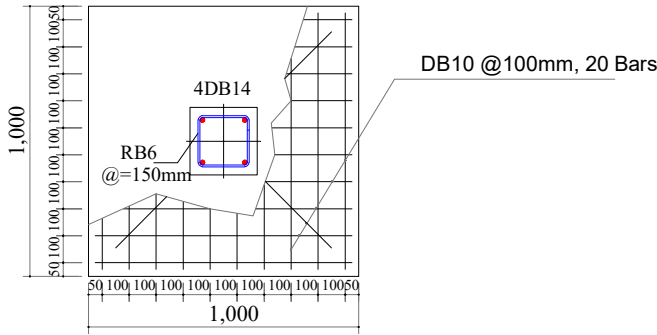


Condition of soil compacting



Section 1-1

Stirrup Detail

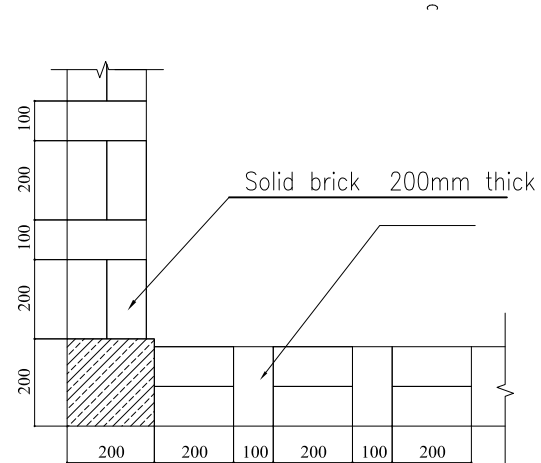
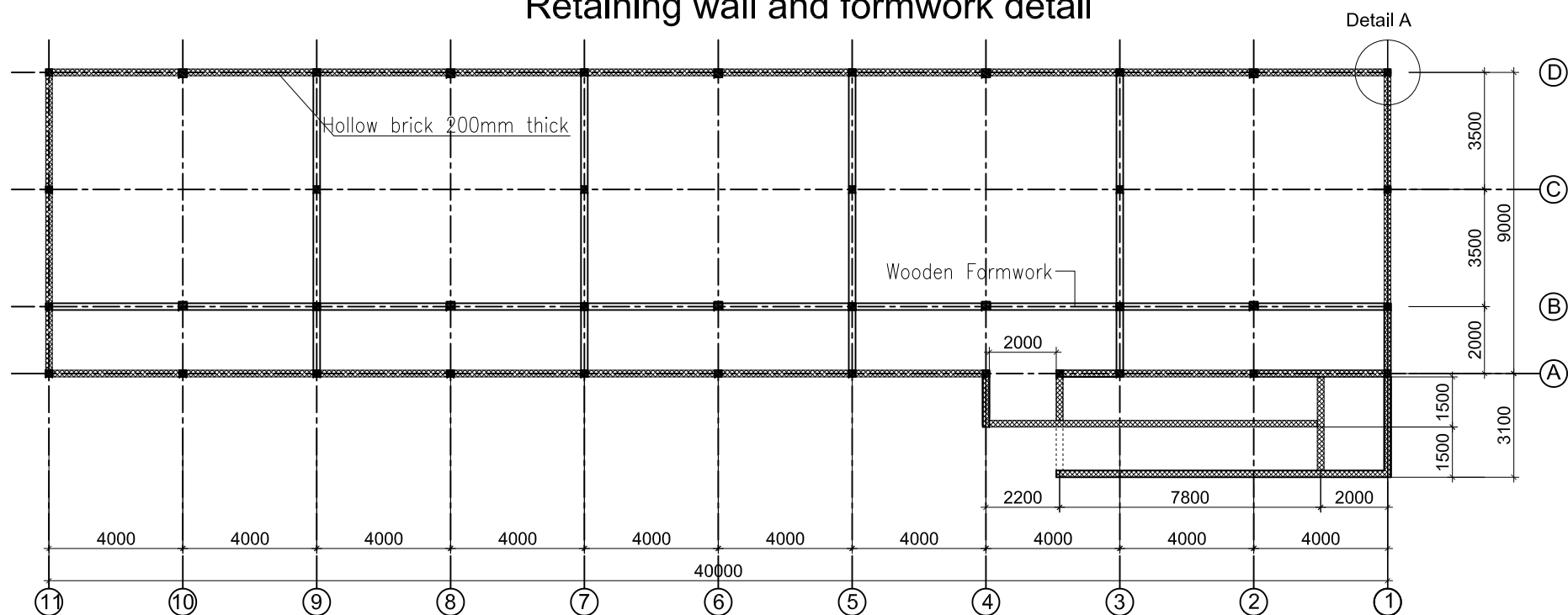


NOTES:

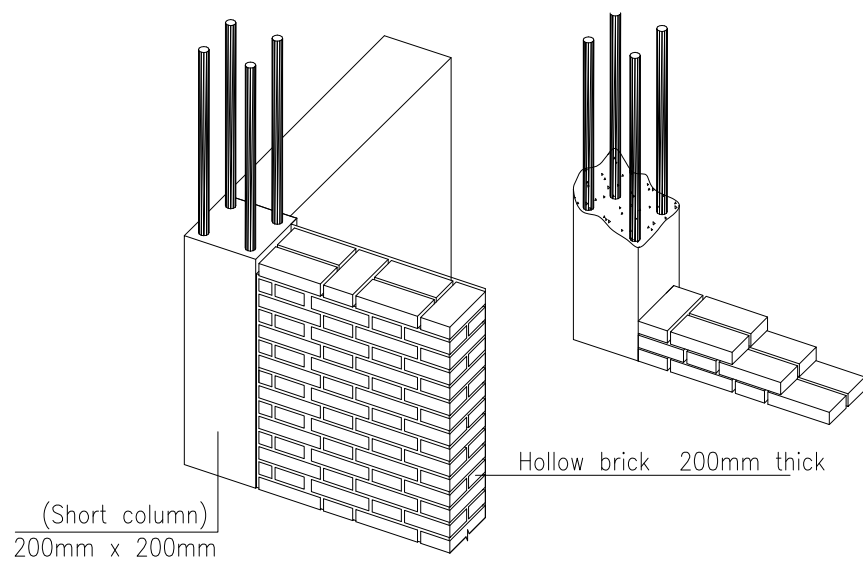
- 1. Concrete cylinder compression strength, 28days is $f_c = 25\text{MPa}$
- 2. DB yield strength $f_y = 390\text{MPa}$
- 3. RB yield strength $f_y = 235\text{MPa}$
- 4. Concrete cover rebar column = 25mm

MINISTRY OF EDUCATION,YOUTH AND SPORT	EDUCATION SECTOR SUPPORT PROJECT SPONSORED BY ACLEDA-JARDINES EDUCATION FOUNDATION (AJF)	DATE...../...../.....		PROJECT : SCHOOL BUILDING 1 STORY 5 CLASSROOMS PLINTH LEVEL +1.00M	SCALE:	NO
		CHECKED BY:	DRAWN BY:		SHEETS:	S16
				DRAWING TITLE : FOOTING AND COLUMN DETAIL F2	SHEET Nº:	S-04

Retaining wall and formwork detail

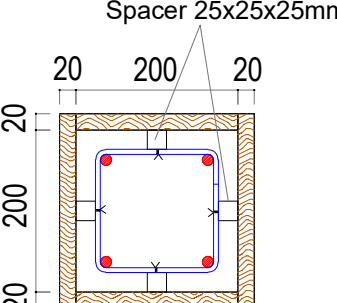
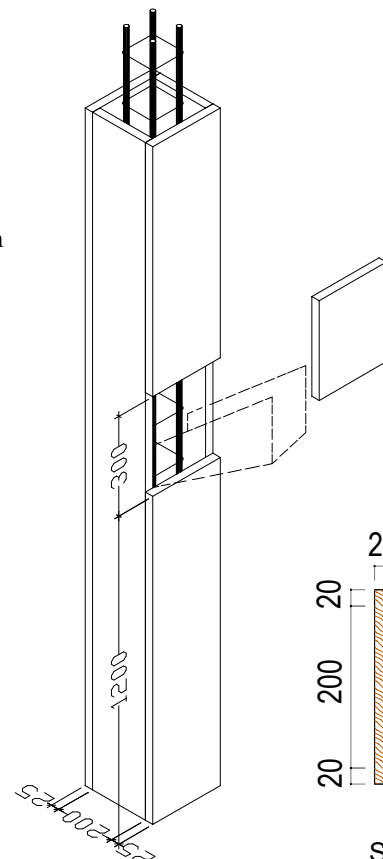
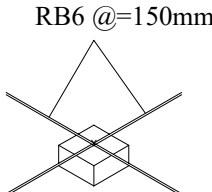
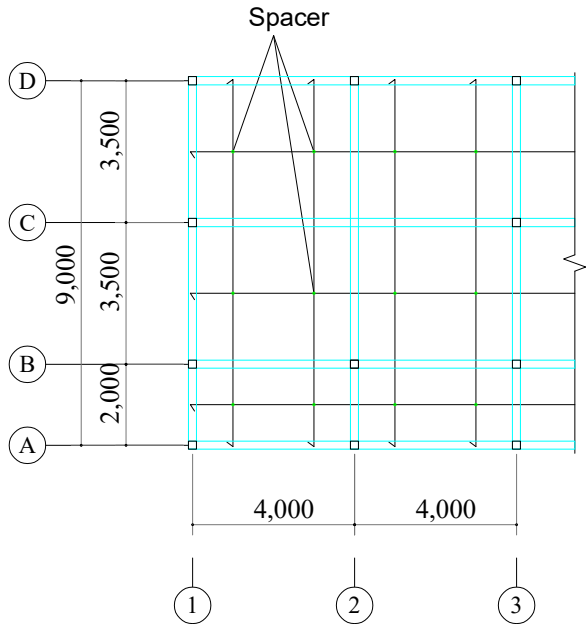
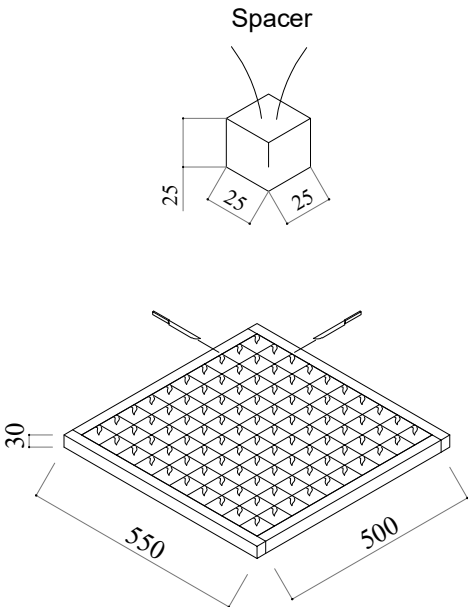


Detail A

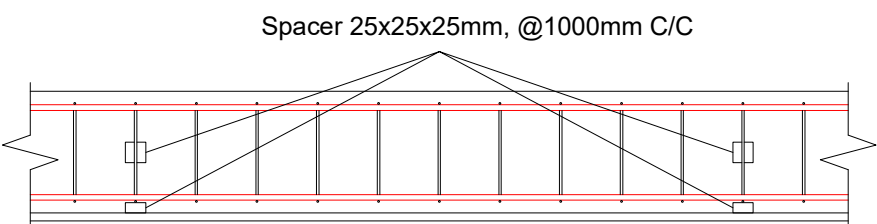


MINISTRY OF EDUCATION,YOUTH AND SPORT	EDUCATION SECTOR SUPPORT PROJECT SPONSORED BY ACLEDA-JARDINES EDUCATION FOUNDATION (AJF)	DATE...../...../.....		PROJECT : SCHOOL BUILDING 1 STORY 5 CLASSROOMS PLINTH LEVEL +1.00M	SCALE:	NO
		CHECKED BY:	DRAWN BY:		SHEETS:	S16
				DRAWING TITLE : RETAINING WALL AND FORMWORK DETAIL	SHEET N°:	S-05

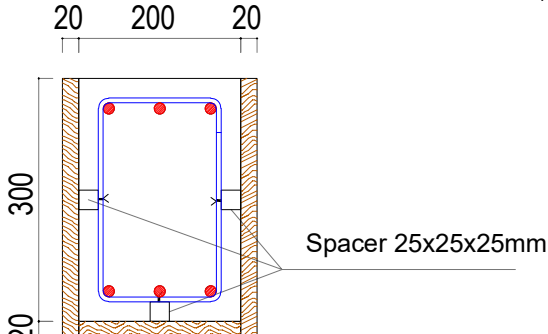
Reinforcement Spacer Detail



Spacer in column



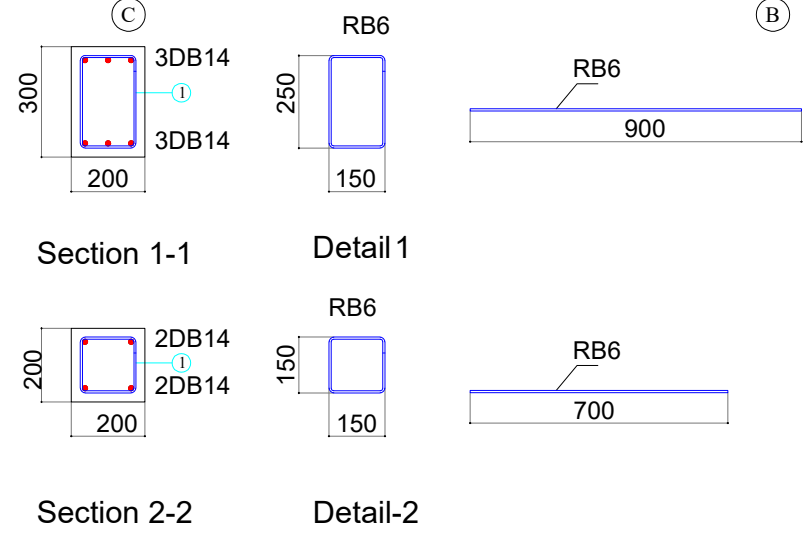
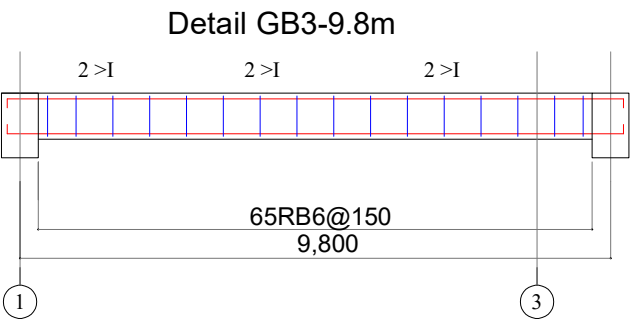
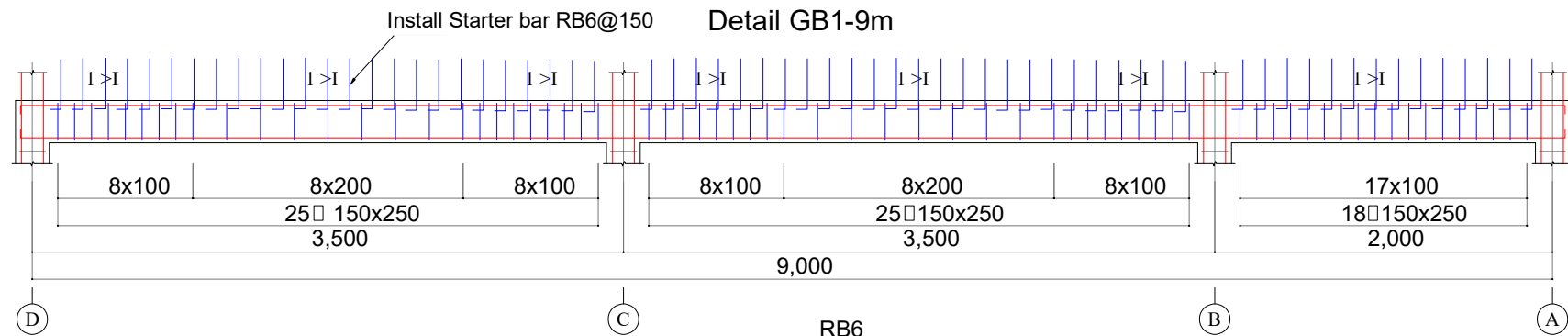
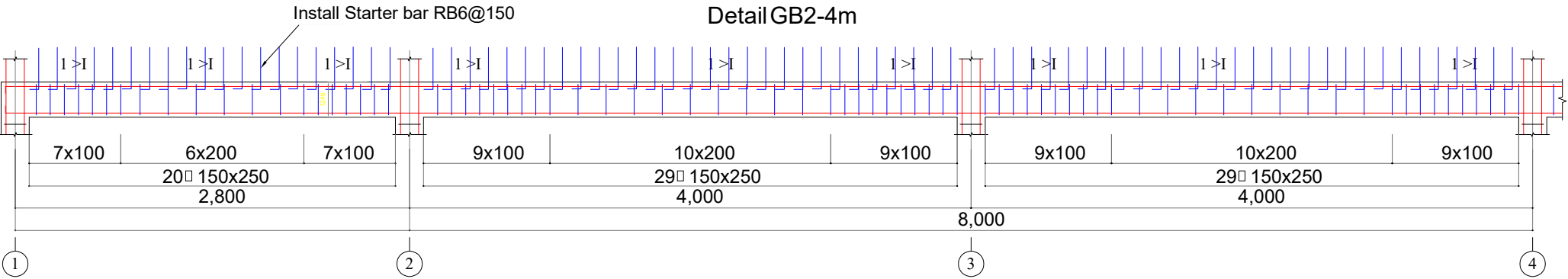
Beam Spacer



Spacer Detail

- NOTES:**
- 1. Concrete cylinder compression strength, 28days is $f'_c = 25\text{MPa}$
 - 2. DB yield strength $f_y = 390\text{MPa}$
 - 3. RB yield strength $f_y = 235\text{MPa}$
 - 4. Concrete cover rebar column = 25mm

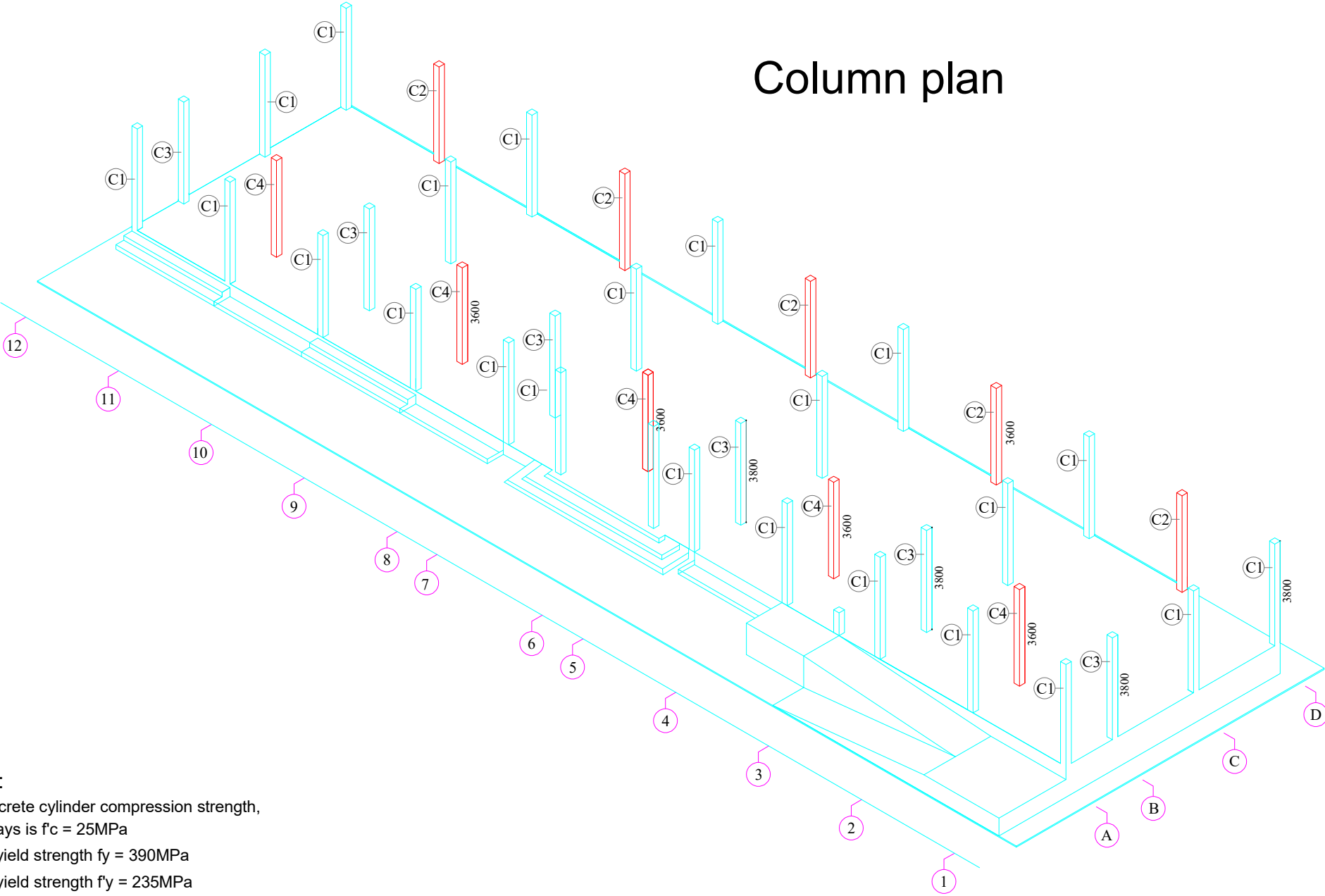
MINISTRY OF EDUCATION,YOUTH AND SPORT	EDUCATION SECTOR SUPPORT PROJECT SPONSORED BY ACLEDA-JARDINES EDUCATION FOUNDATION (AJF)	DATE...../...../.....		PROJECT : SCHOOL BUILDING 1 STORY 5 CLASSROOMS PLINTH LEVEL +1.00M	SCALE:	NO
		CHECKED BY:	DRAWN BY:		SHEETS:	S16
				DRAWING TITLE : REINFORCEMENT SPACER DETAIL	SHEET N°:	S-06



- NOTES:**
1. Concrete cylinder compression strength, 28days is $f'_c = 25\text{MPa}$
 2. DB yield strength $f_y = 390\text{MPa}$
 3. RB yield strength $f_y = 235\text{MPa}$
 4. Concrete cover rebar column = 25mm

MINISTRY OF EDUCATION,YOUTH AND SPORT	EDUCATION SECTOR SUPPORT PROJECT SPONSORED BY ACLEDA-JARDINES EDUCATION FOUNDATION (AJF)	DATE...../...../.....		PROJECT : SCHOOL BUILDING 1 STORY 5 CLASSROOMS PLINTH LEVEL +1.00M	SCALE:	NO
		CHECKED BY:	DRAWN BY:		SHEETS:	S16
		DRAWING TITLE : GROUND BEAM DETAIL		SHEET Nº:	S-08	

Column plan



- NOTES:**
- 1. Concrete cylinder compression strength, 28days is $f_c = 25\text{MPa}$
 - 2. DB yield strength $f_y = 390\text{MPa}$
 - 3. RB yield strength $f_y = 235\text{MPa}$
 - 4. Concrete cover rebar column = 25mm

MINISTRY OF EDUCATION,YOUTH AND SPORT	EDUCATION SECTOR SUPPORT PROJECT SPONSORED BY ACLEDA-JARDINES EDUCATION FOUNDATION (AJF)	DATE...../...../.....		PROJECT : SCHOOL BUILDING 1 STORY 5 CLASSROOMS PLINTH LEVEL +1.00M	SCALE:	NO
		CHECKED BY:	DRAWN BY:	DRAWING TITLE : COLUMN PLAN	SHEETS:	S16
					SHEET Nº:	S-09

Figure 1 shows the dimensions of the test specimens. (a) Top view of a square specimen with outer dimensions 200 mm by 200 mm and inner dimensions 150 mm by 150 mm, labeled 4DB14 and 1-1. (b) Side view of a rectangular specimen with height 150 mm and width 150 mm, labeled RB6.

C2 & C4 Details

Section 2-2

250

250

4DB14

RB6

200

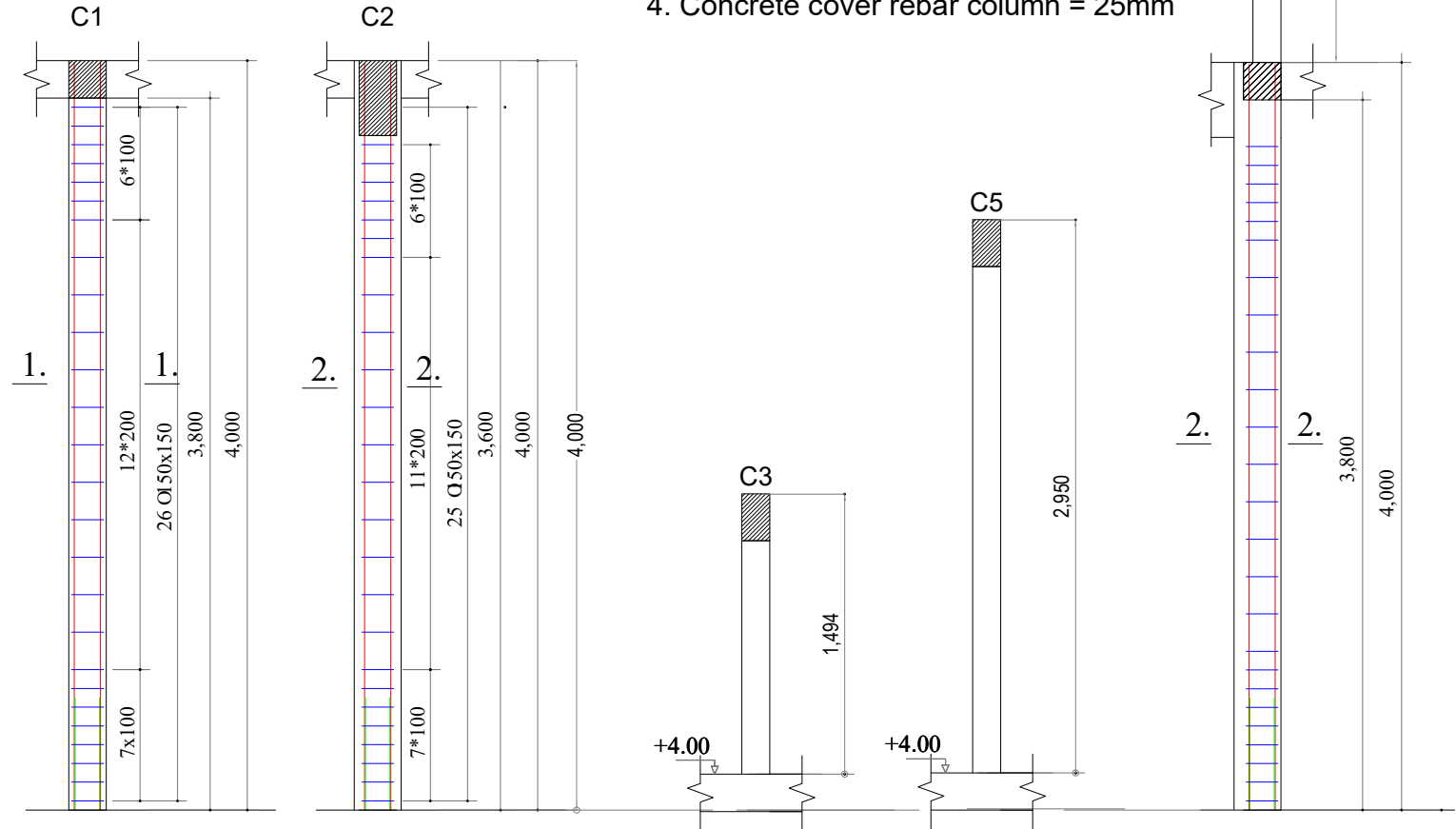
200

2-2

900

RB6

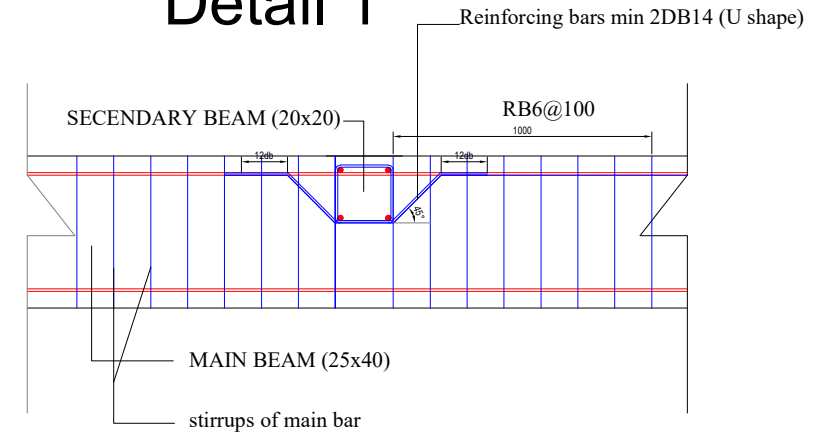
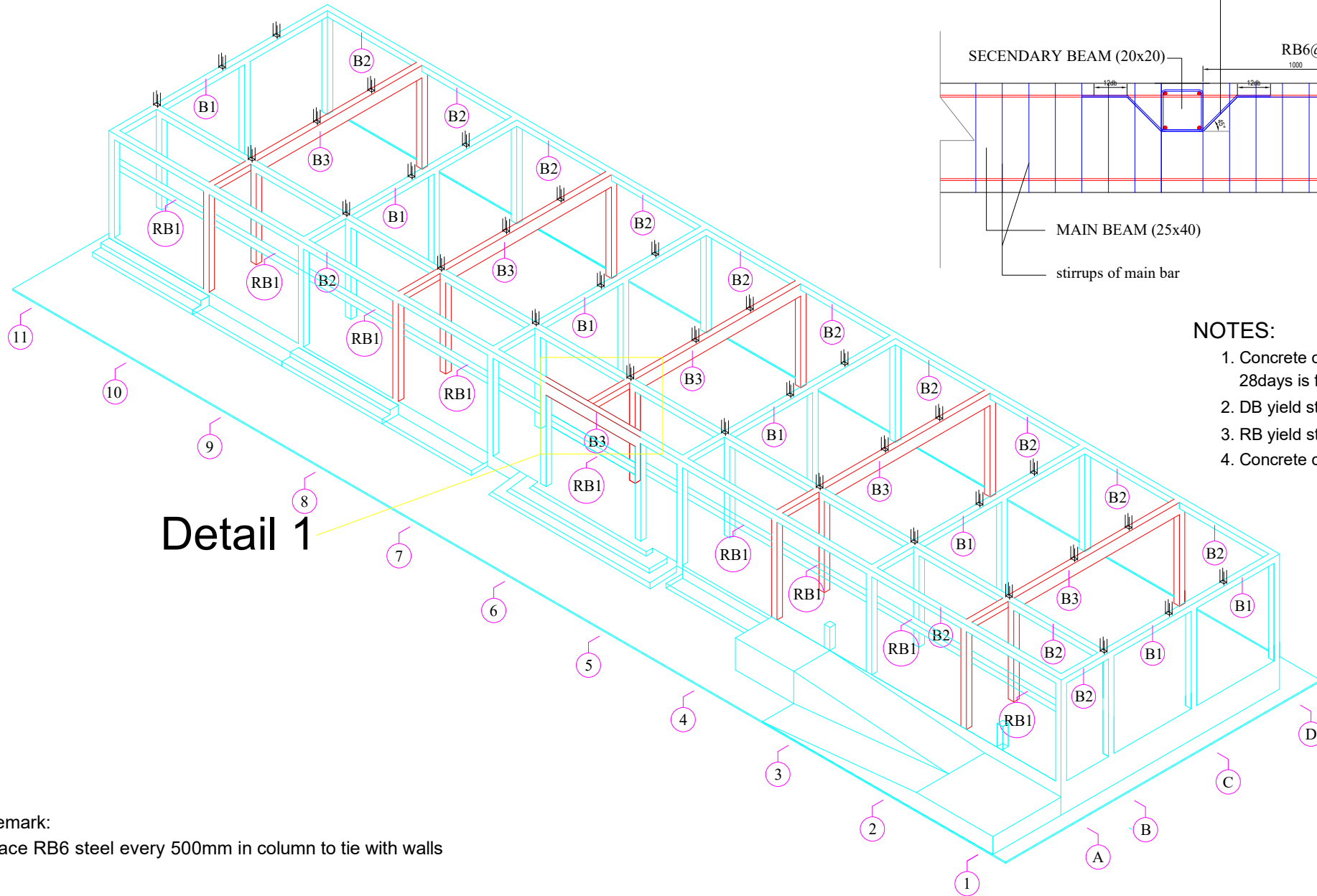
1. Concrete cylinder compression strength, 28days is $f'_c = 25\text{MPa}$
2. DB yield strength $f_y = 390\text{MPa}$
3. RB yield strength $f'_y = 235\text{MPa}$
4. Concrete cover rebar column = 25mm



MINISTRY OF EDUCATION,YOUTH AND SPORT	EDUCATION SECTOR SUPPORT PROJECT SPONSORED BY ACLEDA-JARDINES EDUCATION FOUNDATION (AJF)	DATE...../...../.....		PROJECT : SCHOOL BUILDING 1 STORY 5 CLASSROOMS PLINTH LEVEL +1.00M	SCALE:	NO
		CHECKED BY:	DRAWN BY:		SHEETS:	S16
				DRAWING TITLE : COLUMN DETAIL	SHEET Nº:	S-10

Over Beam Plan

Detail 1

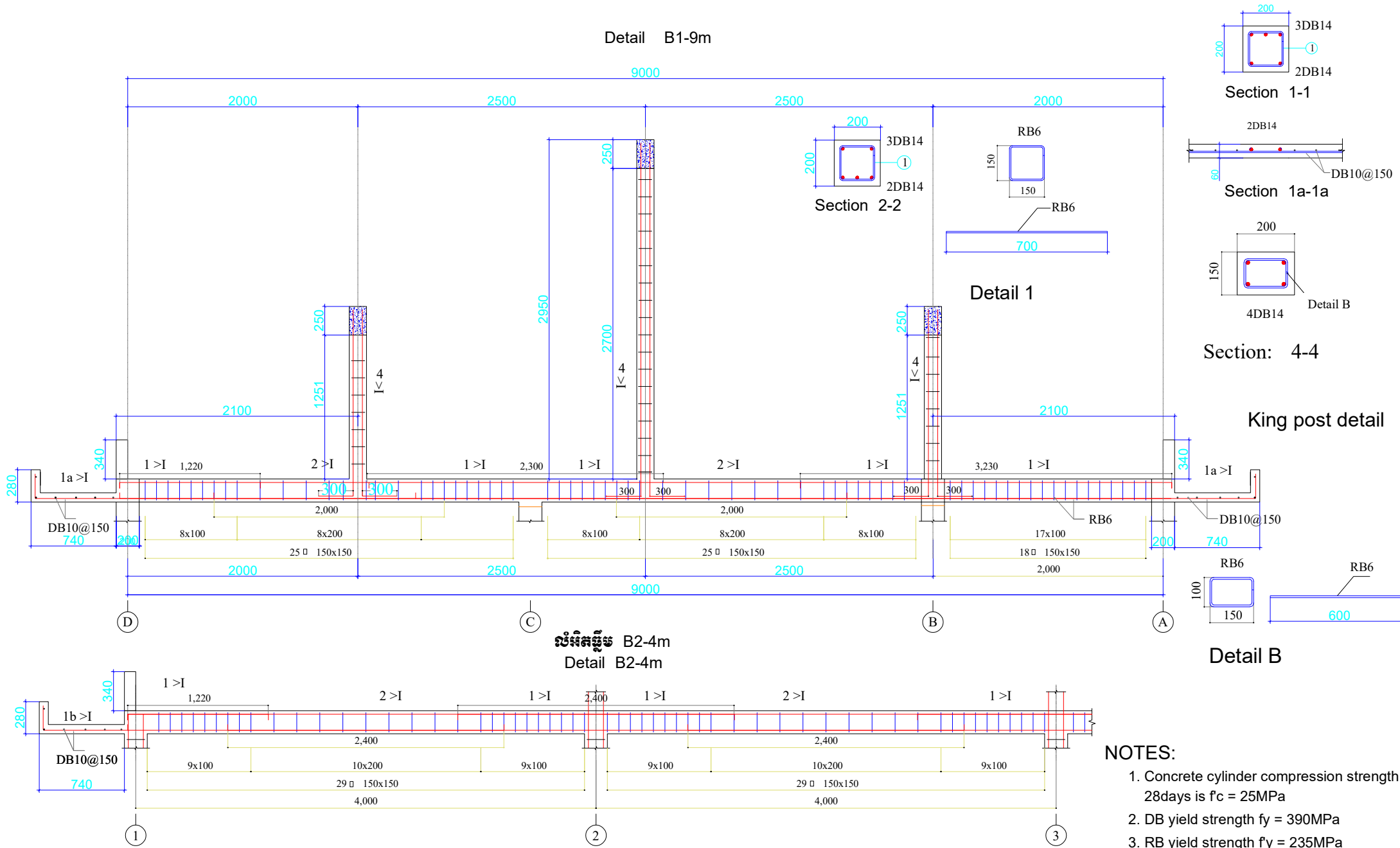


NOTES:

1. Concrete cylinder compression strength, 28days is $f'_c = 25\text{MPa}$
2. DB yield strength $f_y = 390\text{MPa}$
3. RB yield strength $f_y = 235\text{MPa}$
4. Concrete cover rebar column = 25mm

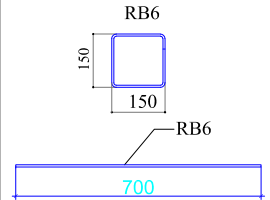
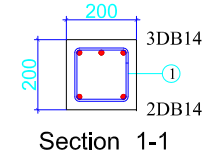
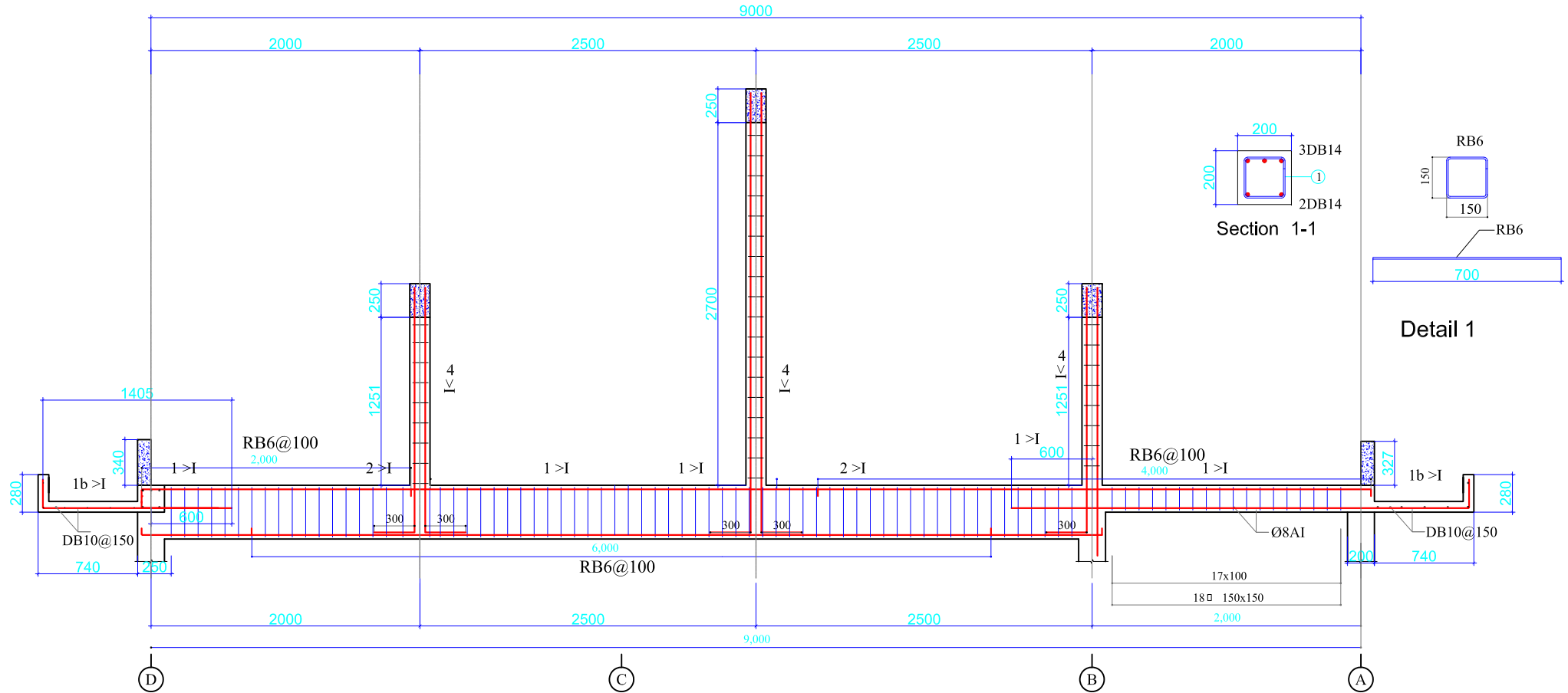
Remark:
Place RB6 steel every 500mm in column to tie with walls

MINISTRY OF EDUCATION,YOUTH AND SPORT	EDUCATION SECTOR SUPPORT PROJECT SPONSORED BY ACLEDA-JARDINES EDUCATION FOUNDATION (AJF)	DATE...../...../.....		PROJECT : SCHOOL BUILDING 1 STORY 5 CLASSROOMS PLINTH LEVEL +1.00M	SCALE:	NO
		CHECKED BY:	DRAWN BY:		SHEETS:	S16
		DRAWING TITLE : OVER BEAM PLAN			SHEET Nº:	S-11

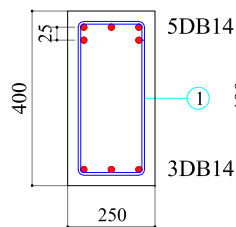


- NOTES:**
- 1. Concrete cylinder compression strength, 28days is $f'_c = 25\text{MPa}$
 - 2. DB yield strength $f_y = 390\text{MPa}$
 - 3. RB yield strength $f_y = 235\text{MPa}$
 - 4. Concrete cover rebar column = 25mm

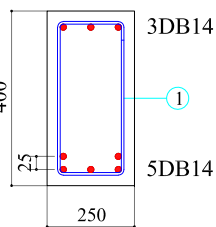
Detail B3-9m



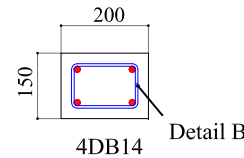
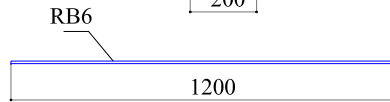
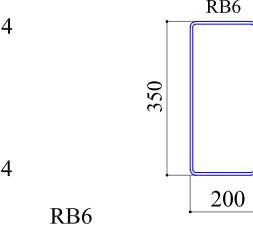
Detail 1



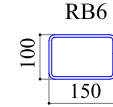
Section 1-1



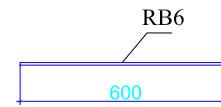
Section 2-2



Section: 4-1



Detail B



NOTES:

1. Concrete cylinder compression strength, 28days is $f_c = 25\text{MPa}$
2. DB yield strength $f_y = 390\text{MPa}$
3. RB yield strength $f_y = 235\text{MPa}$
4. Concrete cover rebar column = 25mm

The floor plan shows a 4,000 mm wide structure with the following layout and dimensions:

- Overall Dimensions:** Total width is 4,000 mm. Total height is 4,000 mm, composed of vertical segments of 250, 1,140, 200, 1,570, 200, and 690 mm.
- Rooms and Features:**
 - W2:** Three rooms, each 1,120 mm wide. The first is 410 mm deep, the second is 950 mm deep, and the third is 730 mm deep.
 - D1:** A room 1,550 mm wide and 2,460 mm deep.
 - Detail 1:** A brick wall section above the first W2 room.
 - Detail 3:** A window with a cross-hatch pattern above the brick wall.
 - RC.Column 100x200:** Two columns are shown, one in each of the first two W2 rooms.
- Detail 1 Callout:** Shows a cross-section of a reinforced concrete column (RC.Column 100x200) with reinforcement bars (RB6 @150mm) and stirrups (2DB10).

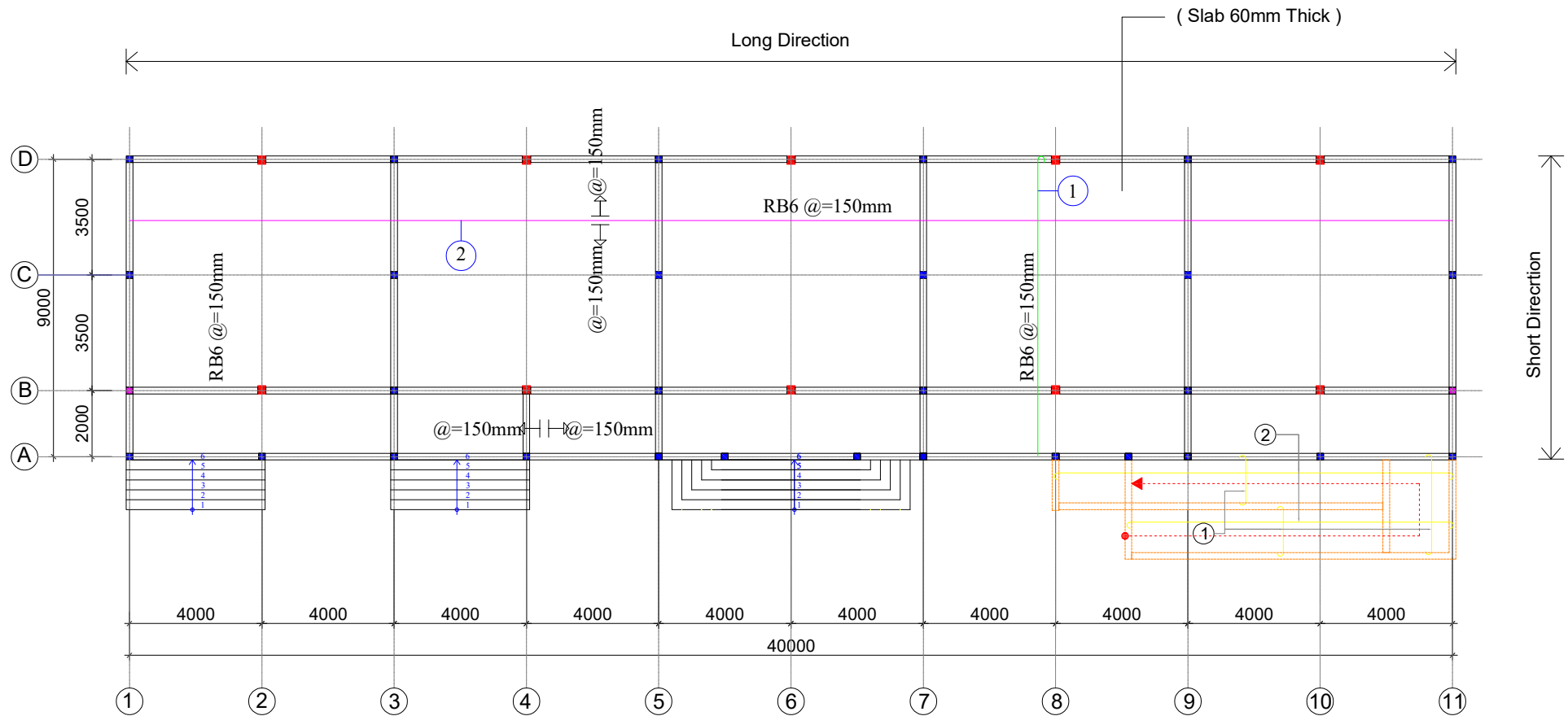
Figure 10: Detail of RC Column and Wall. The figure shows two cross-sectional views of a wall and column assembly. The left view shows a wall (W1) with a central RC column (100x200) and a brickwork section above it. The right view shows a similar wall (W1) with a central RC column (100x200) and a brickwork section above it. Dimensions are provided for both views: 1570 mm height, 820 mm wall thickness, 2160 mm column width, and 200 mm gap. A detail view shows the RC column reinforcement with RB6@150mm and 2DB10 bars.

Figure 1: Dimensions of the experimental specimen. The diagram shows a rectangular specimen with a height of 1245 mm and a total width of 3,760 mm. The width is divided into five sections: two end sections of 710 mm each and three middle sections of 720 mm each. The specimen is reinforced with L25x25 bars and a 30mm steel mesh.

Figure 10 is a sectional view of the beam-column joint. The diagram shows a cross-section of a beam and column joint. The column is on the left, and the beam is on the right. The column has a height of 4,000 mm. The beam has a height of 700 mm. The joint is labeled 'Detail 4'. The beam reinforcement is labeled 'RB6 @150mm'. A circular detail is labeled 'Detail 2'.

1. Concrete cylinder compression strength, 28days is $f'_c = 25\text{MPa}$
2. DB yield strength $f_y = 390\text{MPa}$
3. RB yield strength $f_y = 235\text{MPa}$
4. Concrete cover rebar column = 25mm

Slab Steel bar Arrangment Detail



NOTES:

1. Concrete cylinder compression strength, 28days is $f'_c = 25\text{MPa}$
2. DB yield strength $f_y = 390\text{MPa}$
3. RB yield strength $f'_y = 235\text{MPa}$
4. Concrete cover rebar column = 25mm

APPROVED BY:
DIRECTOR OF DOC

Note:

- ① Place Rebar RB6 in short direction first
- ② Place Rebar RB6 in long direction second

MINISTRY OF EDUCATION,YOUTH AND SPORT	EDUCATION SECTOR SUPPORT PROJECT SPONSORED BY ACLEDA-JARDINES EDUCATION FOUNDATION (AJF)	DATE...../...../.....		PROJECT : SCHOOL BUILDING 1 STORY 5 CLASSROOMS PLINTH LEVEL +1.00M	SCALE:	NO
		CHECKED BY:	DRAWN BY:		SHEETS:	S16
				DRAWING TITLE : SLAB STEEL BAR ARRANGMENT DETAIL	SHEET N ^o :	S-16